



FACET



**BLUE COAST
ENGINEERING**



**DEPARTMENT OF
ECOLOGY**
State of Washington



KITSAP COUNTY

Sea Level Rise Vulnerability and Risk Assessment

Central Kitsap Community Council Silverdale Focus

This project is being funded under a Shoreline Planning Competitive Grant received by the State of Washington Department of Ecology under Grant Agreement No. SEASPC-2325-KiCoCD-00014



Agenda

- Project Overview
- Risk Exposure Assessment Results
- Draft Maps – Silverdale Community
- Draft Mitigation Strategies
- Timeline/Next Steps
- Q&A



FACET



**BLUE COAST
ENGINEERING**

Project Purpose

Identify

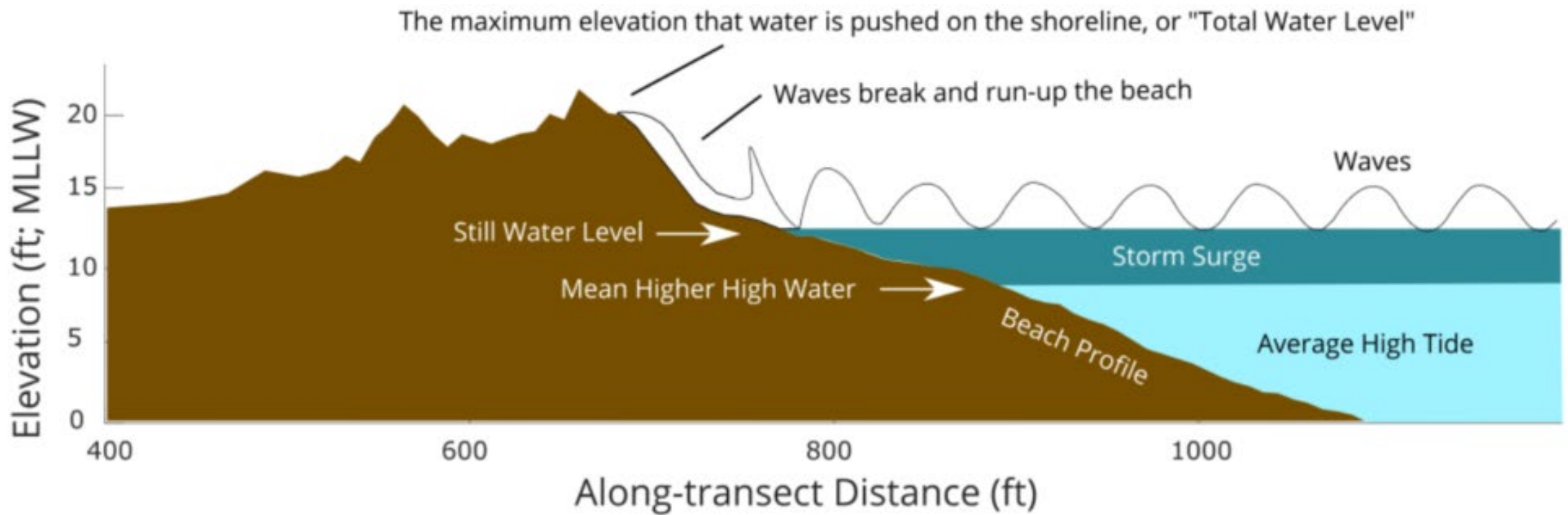
Identify assets with potential for loss of damage from sea level rise.

Complete

Complete risk analysis and vulnerability assessment, based on mapping predictions to be decided by the Technical Advisory Committee (TAC) in July.

Propose

Propose practical region-specific actions or projects, to address increased sea water interactions where appropriate.



Source: Miller et al. 2019. Extreme Coastal Water Level in Washington State: Guidelines to Support Sea Level Rise Planning.
<https://cig.uw.edu/publications/extreme-coastal-water-level-in-washington-state-guidelines-to-support-sea-level-rise-planning/>

Projections – What are they?

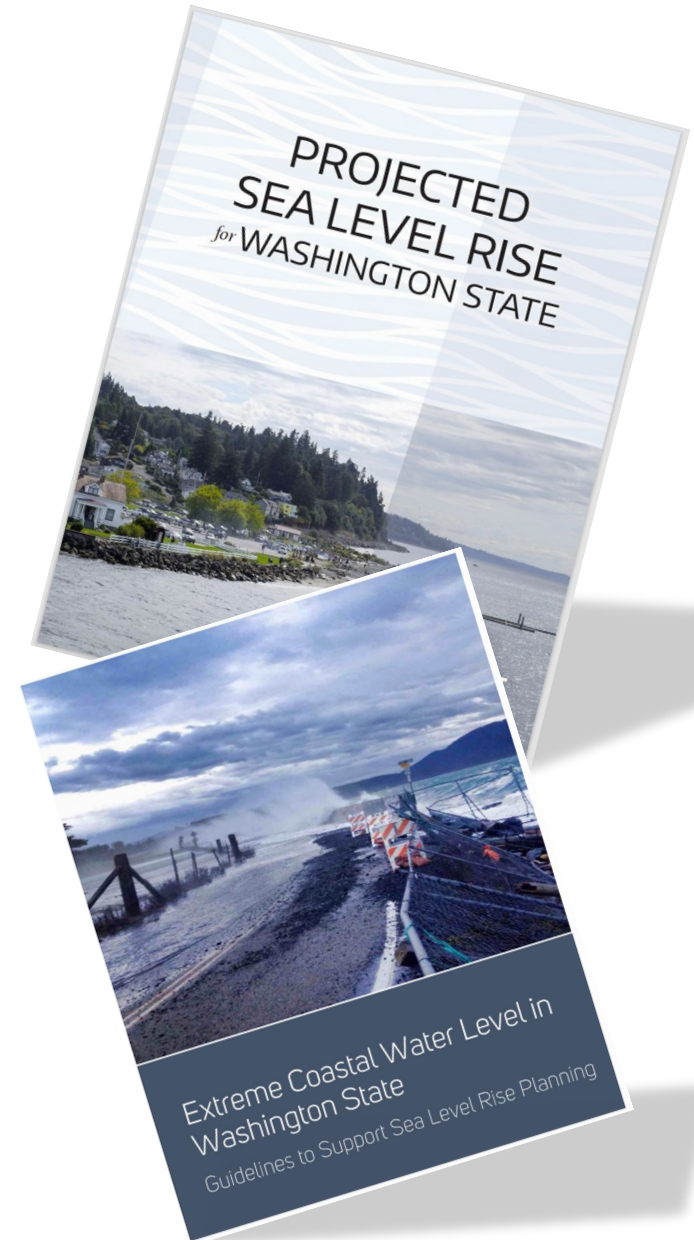
- How are Sea Level Rise (SLR) & flood levels estimated?
 - Probability Confidence
 - International predictions based on emissions
 - Tide gauge trends – Mean Higher High Water (MHHW) and extreme flood
- Relative Sea Level Rise
 - Absolute SLR + Land Movement
- Confidence Intervals by year

Projections - Where do the levels come from?

- **2018 Report**
 - “Stillwater”, no wave run-up
- **2019 Report**
 - Extreme water levels seen by tide gauges

[Resilience Resource Library | Washington Coastal Hazards Resilience Network](#)
(wacoastalnetwork.com)

[Washington Sea Grant - YouTube](#)

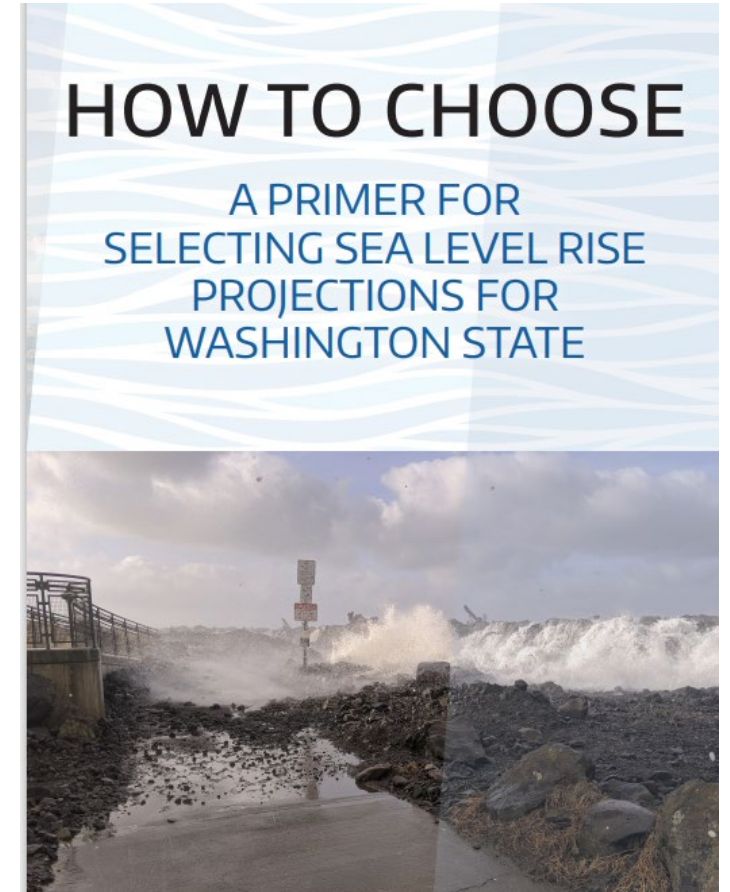


Projections – Selected by Technical Advisory Committee

1. RCP: 4.5 or **8.5**

2. Timeframe: **2050?** 2060? **2100?** 2150*?

3. Certainty/Level of Risk: **1%** (less likely),
50%, 90% (very likely)



Exposure Risk Levels

Modeled Increases of tidal height, due to projected sea level rise and extreme flooding, for Kitsap County by 2050 and 2100 under different certainties.

	Certainty			50-yr Return Flood with 90% certainty		50-yr Return Flood with 50% Certainty		50-yr Return Flood with 1% certainty		
	90%	50%	1%	West-, East- and North-facing shorelines, Dyes	Sinclair, Agate Pass, Port Gamble, Liberty	West-, East- and North-facing shorelines, Dyes	Sinclair, Agate Pass, Port Gamble, Liberty	West-, East- and North-facing shorelines	Sinclair, Agate Pass, Port Gamble, Dyes	Liberty
2050	0.5 ft	1 ft	1.5 ft	3.5 ft	4 ft	4 ft	4.5 ft	4.5 ft	5 ft	5.5 ft
2100	1.5 ft	2.5 ft	5 ft	4.5 ft	5 ft	5.5 ft	6 ft	8 ft	8.5 ft	9 ft

Using the RCP 8.5 projections. Sources: Projected Sea Level Rise for Washington State (Miller et al, 2018) ; Extreme Coastal Water Level in Washington State: Guidelines to Support Sea Level Rise Planning (Miller et al, 2019); NOAA Sea Level Rise Viewer Data Download (2024).

Assets

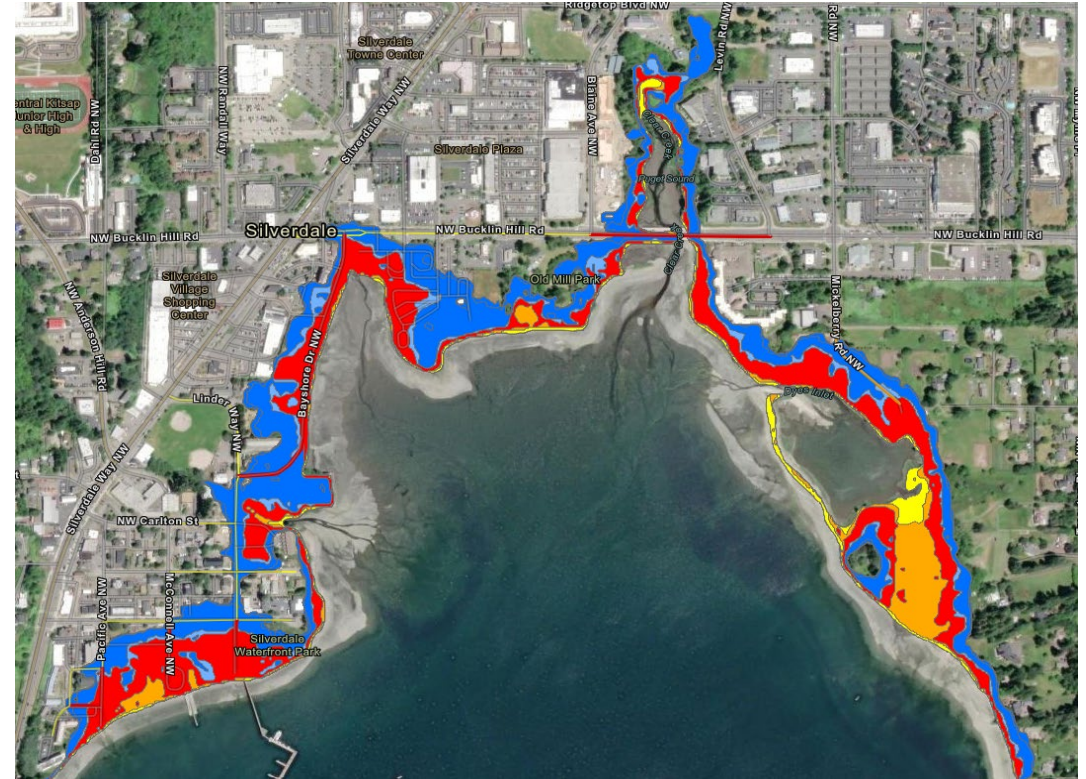
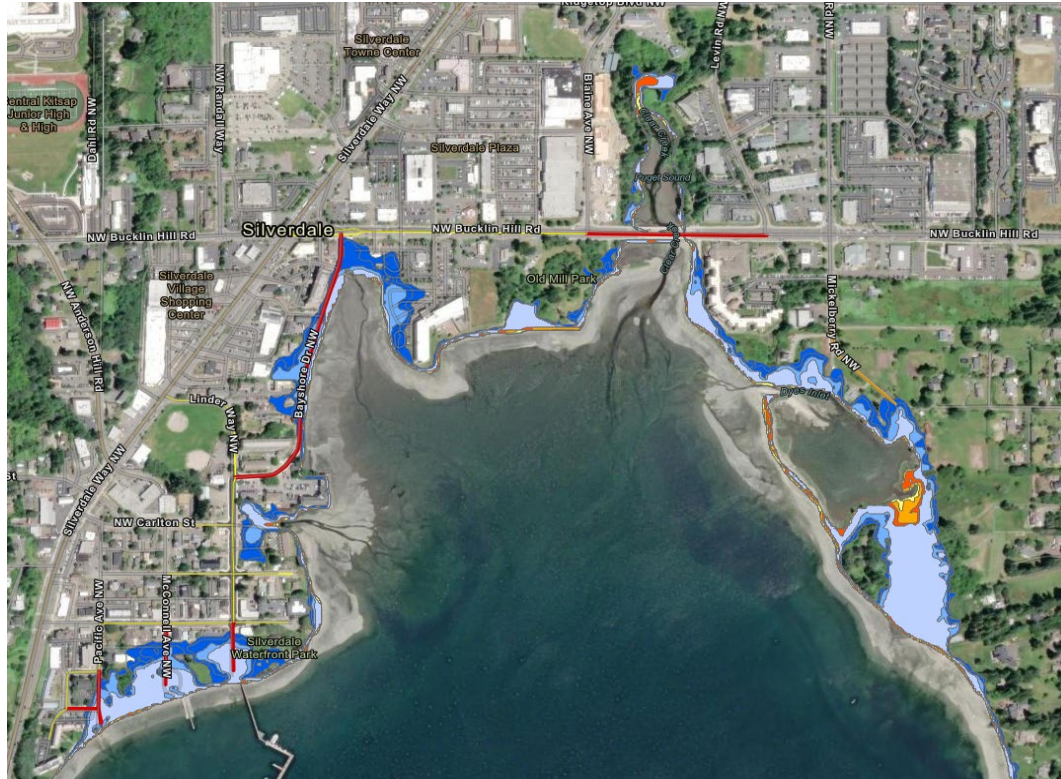
Italics means assessments pending and not included in draft report as of 02/07/2025

Transportation	Structures	Water Infrastructure	Environmental	Land Use
Roads and Transportation	Coastal Residences	Coastal On-Site Septic Systems	<i>Beach Access</i>	Agricultural Land/Farmland
Airports	County Buildings	Group A Water Systems	Marinas and Bays	Brownfield Sites
	Fire Stations	<i>PUD Stations and Structures</i>	Wetlands and Estuaries	Landfills
	Historic and Cultural Sites	Sewer Districts/Water Treatment Plants		Parks
	Hospitals	Wastewater Treatment Facilities		Ports (?)
	Libraries			<i>Shellfish/Seafood Industrial Facilities</i>
	Police Stations			
	Schools			

Silverdale & Dyes Inlet

2050

2100

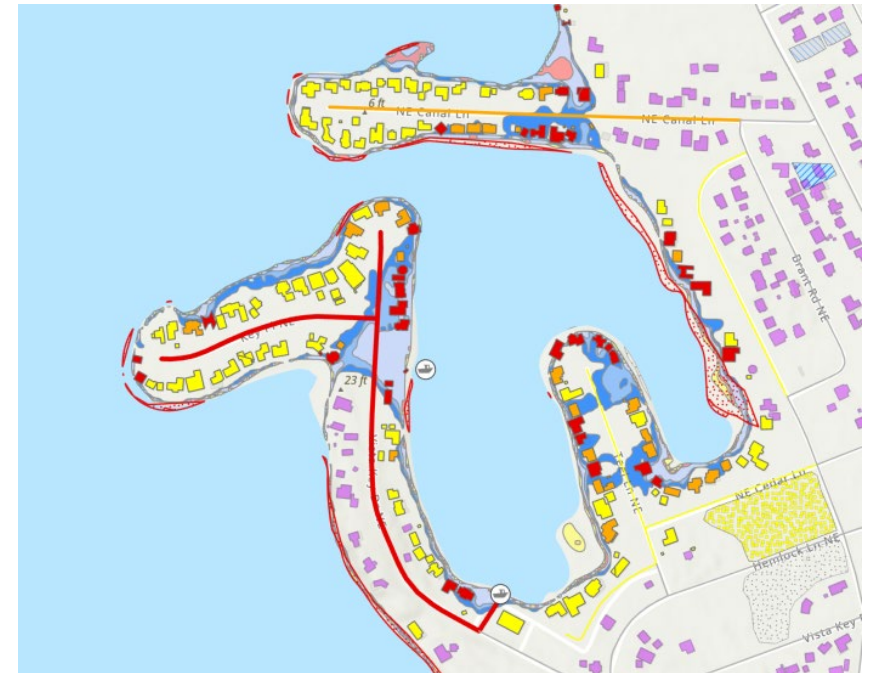
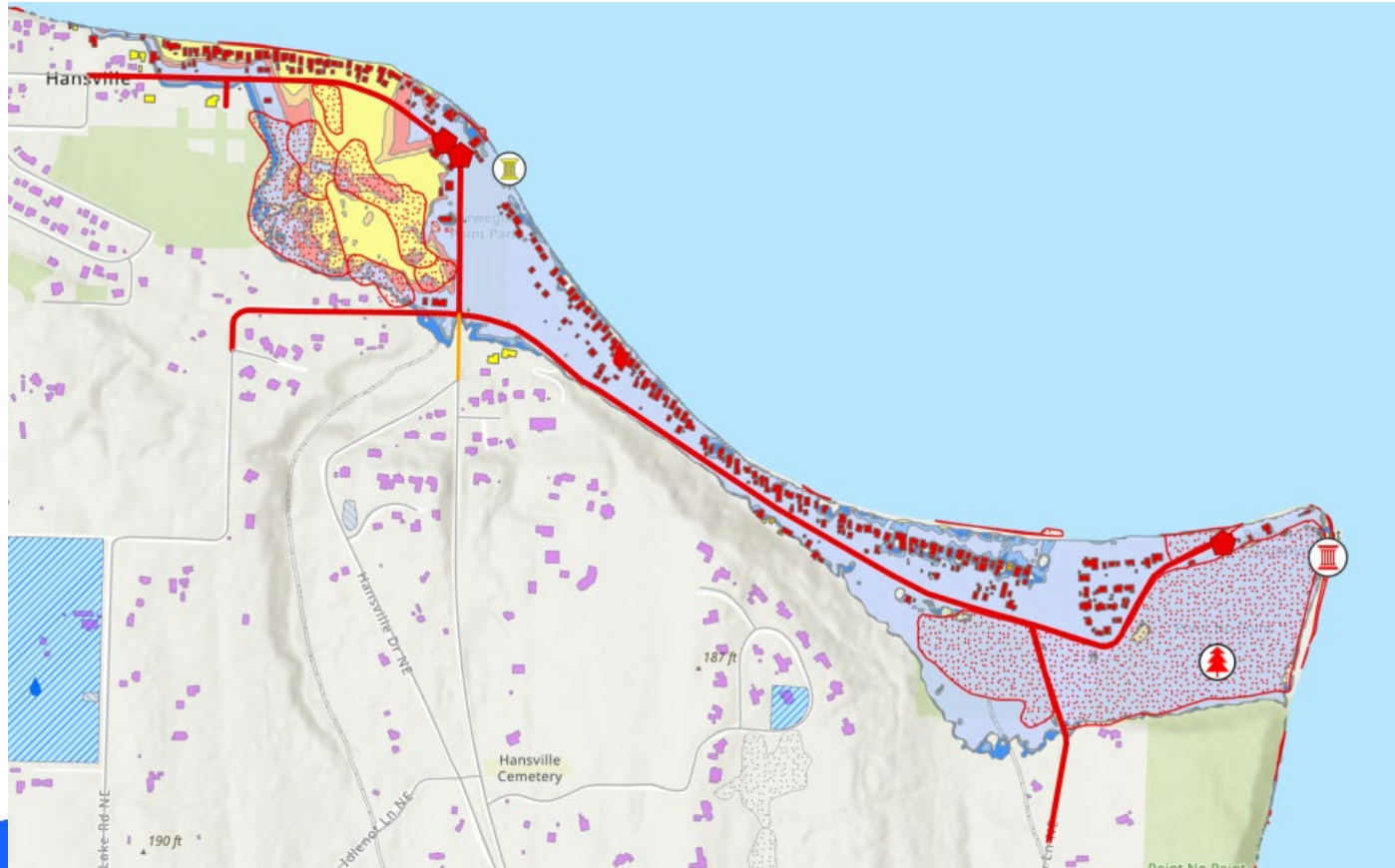


FACET



**BLUE COAST
ENGINEERING**

Assets with an exposure risk



Potential Mitigation Strategies

Development standard revisions

Require SLR projections in assessments or reports

Review development setbacks near bluffs

Limit redevelopment/expansion of legal non-conforming structures in vulnerable locations

Incorporate SLR projections when planning for and permitting critical infrastructure and facilities

Increase floodproof requirements for high-risk structures, incl FFRMS

Map channel migration zones

Incorporate climate change impacts in design efforts

Potential Mitigation Strategies (Cont...)

Public Outreach and Incentives

Incentivize passive management strategies

Encourage alternatives to hard shoreline stabilization methods

Provide support for educational opportunities on raising or moving vulnerable structures, retrofitting buildings, and other measures, including funding sources.

Incentivize community flood control

Infrastructure Planning and Improvements

Prioritize transportation connectivity and resilience

Evaluate existing stormwater infrastructure and conduct maintenance as needed

Evaluate impacts to commercial water dependent industries

Timeline

Public Meeting #1 – Port Orchard	September 2024	Project Overview
Public Survey	September 2024	Public and Agency Surveys on Concerns and Priorities
TAC Meeting #3	December 4, 2024	Review of Preliminary Maps
Public Meeting #2 - Kingston	December 12, 2024	Review Draft Maps, Survey Results and Preliminary Findings
Draft Documents	January 2024	Draft Maps Published
TAC Meeting #4	February 19, 2025	Review and Discussion of Draft Report
Public Meeting #3 - Hansville	February 25, 2025	Review Draft Maps, Preliminary Results and Strategies
Final Draft Documents	Early May 2025	Draft Documents Published
Planning Commission Meeting /Public Meeting #4	May/June 2025	Review and Discussion of Draft Audit Summary Memorandum and Report
Board of Commissioners/Public Meeting #4	May/June 2025	Review and Discussion of Final Documents and draft amendments contained within the Audit Summary Memorandum.
Final Report	June 2025	Final Documents Published

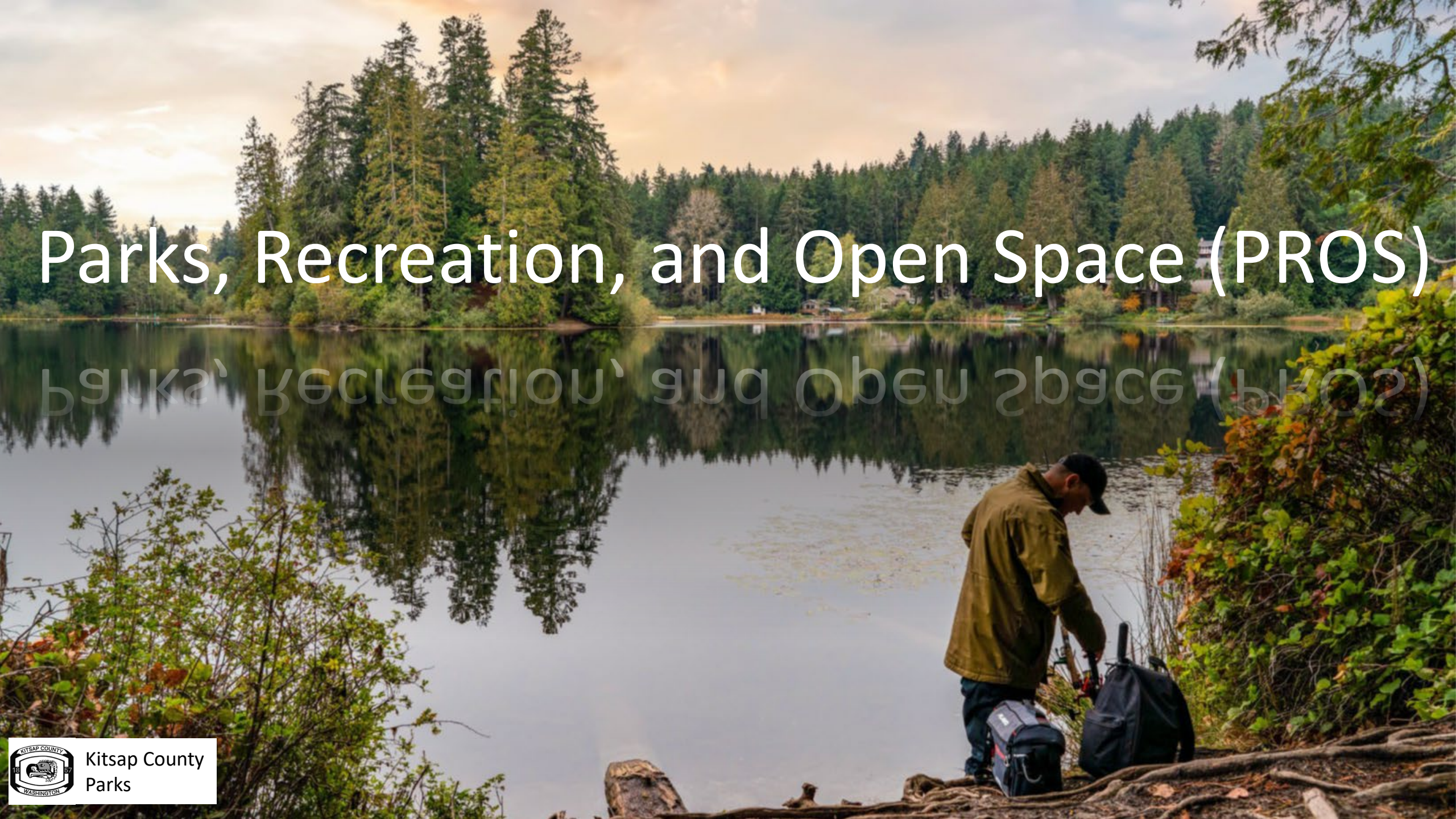
Next Steps

- Complete remaining analyses and implement adaptive capacity criteria
- Receive feedback from Ecology and County staff
- Complete audit of County Codes and Plans to incorporate into report
- Publish online map of projections
- Update ArcGIS StoryMap with assessment results
- Develop a prioritization of public infrastructure in coordination with Public Works and utilities staff
- Meet with decision makers (Planning Commission and Board of County Commissioners) and finalize report, June 2025.

Questions?

www.kcowa.us/KitsapSLR





Parks, Recreation, and Open Space (PROS)

Parks, Recreation, and Open Space (PROS)

PROS Plan

What is it?

- A 6-year strategic plan
- A guide for policy development
- A guide for departmental decisions
- A guide to park improvement and capital projects



PROS Plan

What is it for?

- Requirement of the Growth Management Act
- Requirement to remain eligible for RCO grants
- Just good practice



PROS Plan

What's in it?

Recreation and Conservation Office (RCO)

Manual 2, *Section 3: Required Elements*

1. Goals and Objectives
2. Inventory Analysis
3. Public Involvement
4. Demand and Need Analysis
5. Capital Facility Plan
6. Adoption



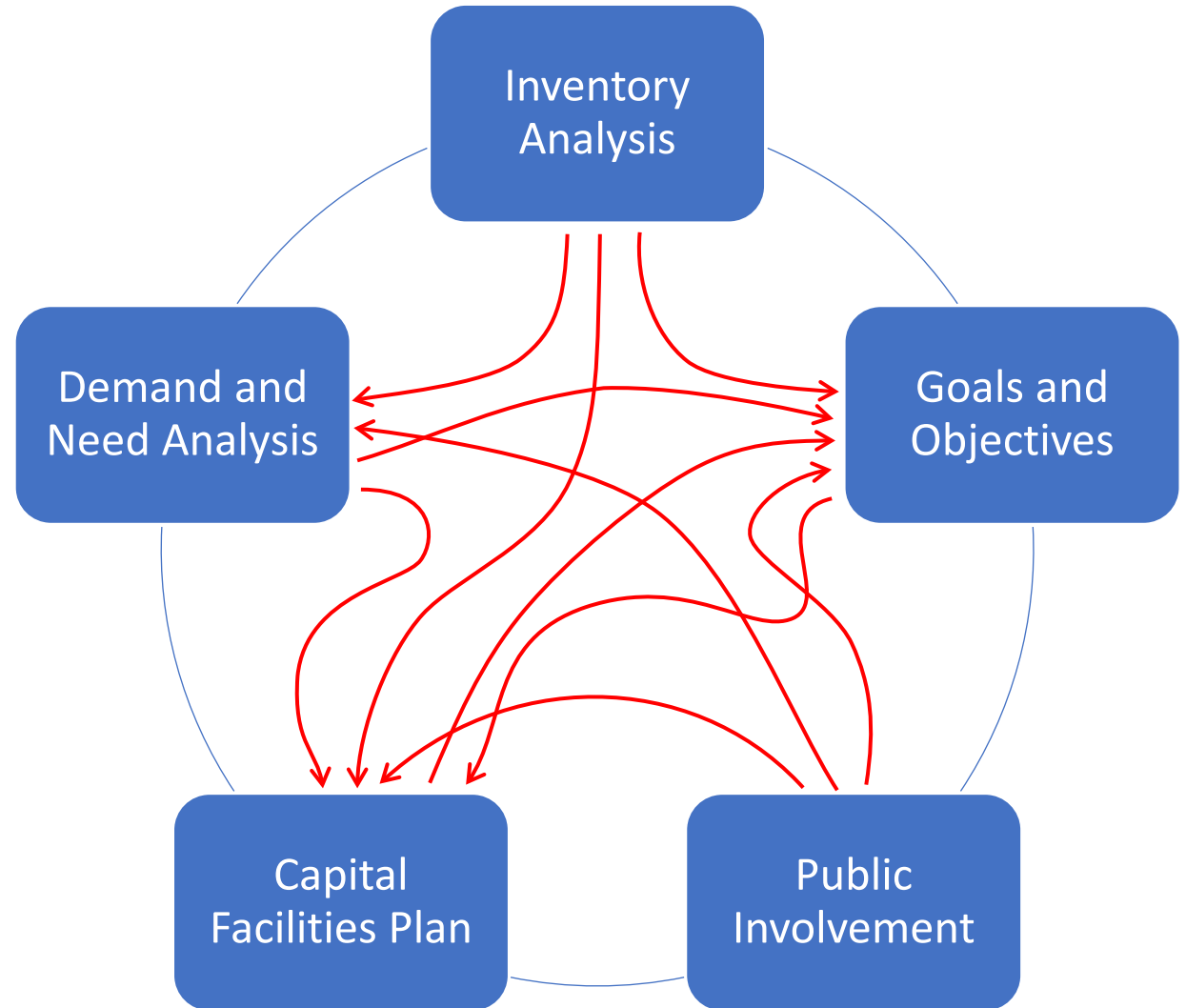
PROS Plan

How was it created?

Recreation and Conservation Office (RCO)

Manual 2, Section 3: Required Elements

1. Goals and Objectives
2. Inventory Analysis
3. Public Involvement
4. Demand and Need Analysis
5. Capital Facility Plan
6. Adoption



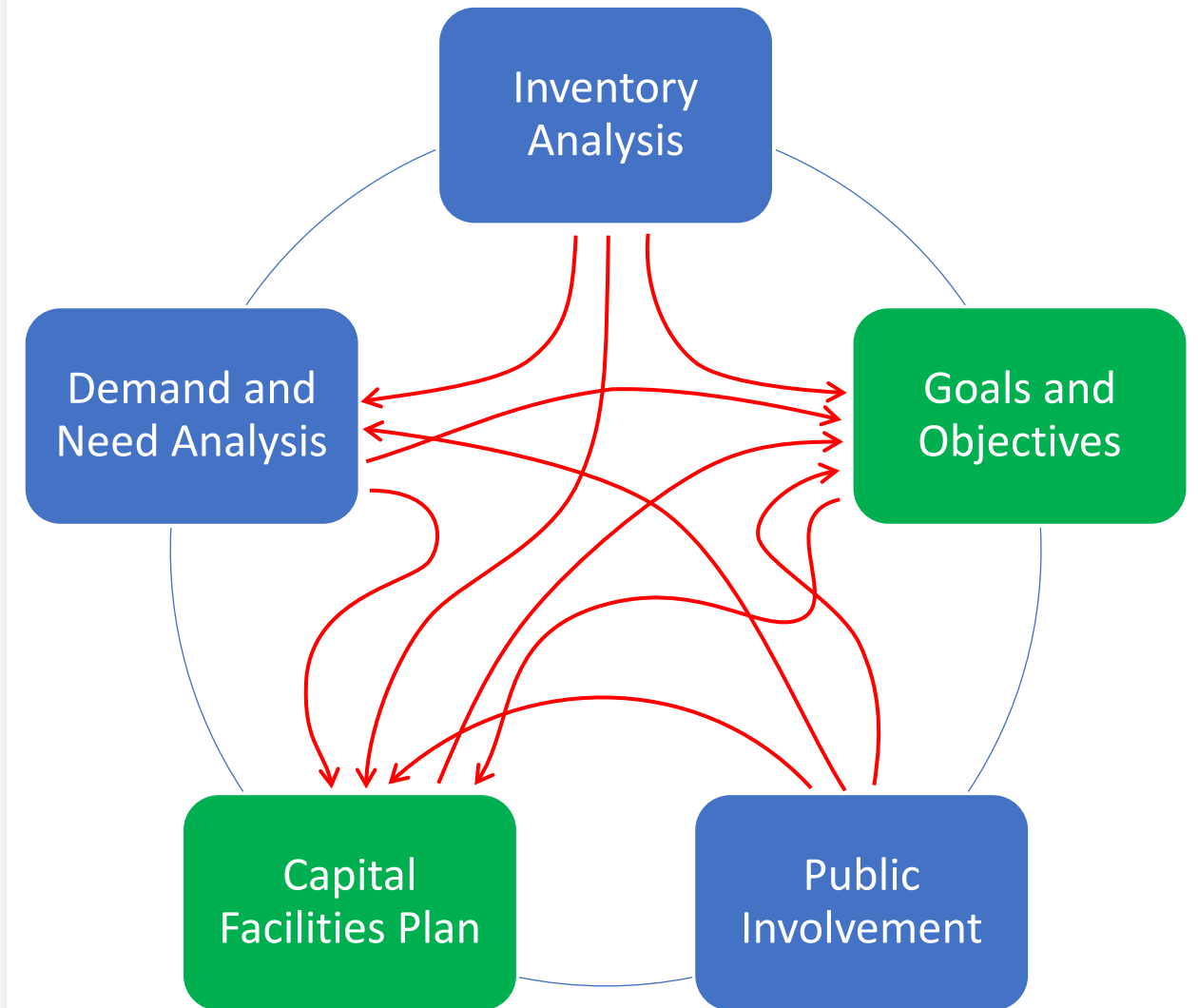
PROS Plan

How was it created?

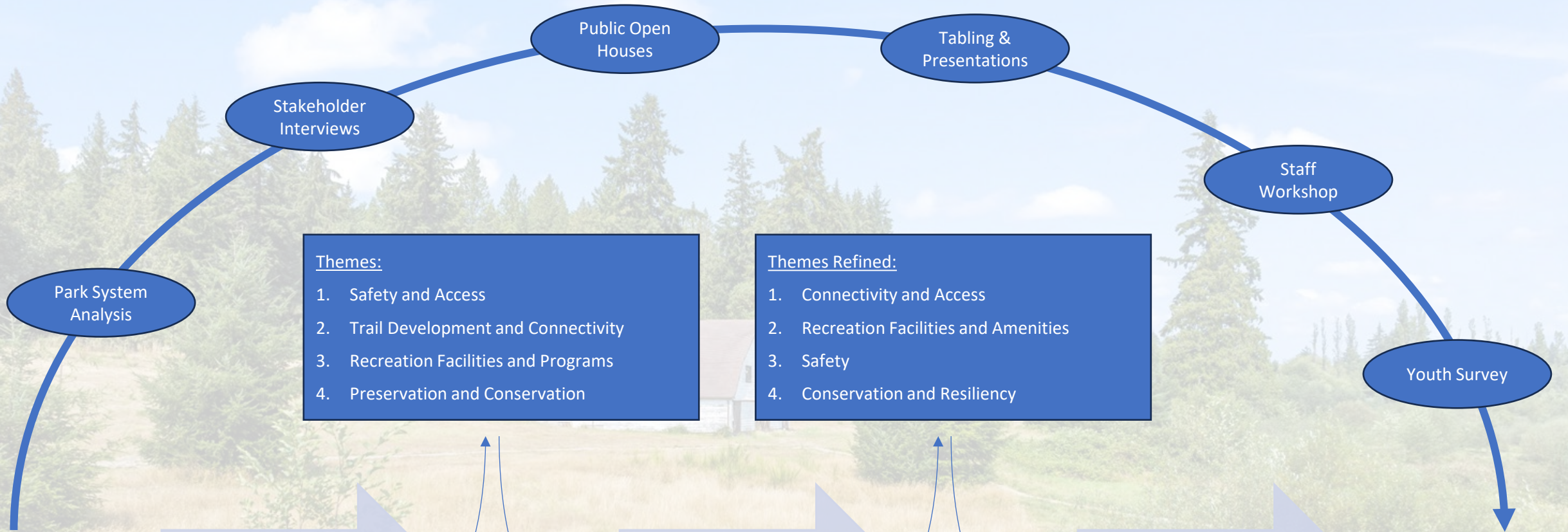
Recreation and Conservation Office (RCO)

Manual 2, Section 3: Required Elements

1. Goals and Objectives
2. Inventory Analysis
3. Public Involvement
4. Demand and Need Analysis
5. Capital Facility Plan
6. Adoption



Public Involvement + Inventory Analysis + Demand and Need Analysis = Goals and Objectives & Capital Facilities Plan



- Themes:
1. Safety and Access
 2. Trail Development and Connectivity
 3. Recreation Facilities and Programs
 4. Preservation and Conservation

- Themes Refined:
1. Connectivity and Access
 2. Recreation Facilities and Amenities
 3. Safety
 4. Conservation and Resiliency

Survey #1
Current Use

- How do you use your parks?
- What activities do you participate in?
- What barriers prevent you from accessing your parks?

Survey #2
Vision for Future

- Where do you want trails to create connections?
- Where do you want new facilities?
- What open spaces need to be protected?

Survey #3
Projects & Priorities

- Park access projects
- Recreation facility projects
- Safety improvement projects
- Conservation and resiliency projects

PROS and 6-year CIP

Inventory & Analysis

“The purpose of this chapter is to gain a broad understanding of the current conditions of Kitsap County’s parks, recreation facilities, open spaces, and trails. It aims to provide insights into the demographics of the population served by these amenities and to situate these resources within the broader regional context and ongoing planning efforts that shape the system.”

Physical Context

- Topography
- Hydrology
- Forest and Tree Canopy
- Wildlife
- Soils
- Climate
- Climate Change Impacts
- Critical Areas

Planning Context

- Existing Plans Working Together
 - Kitsap County Comprehensive Plan (2024)
 - Kitsap County Non-Motorized Facility Plan (2013/18)
 - Kitsap County PROS (2018)

Demographic Context

- Population and Projected Growth
- Age & Gender
- Race & Ethnicity
- Disability
- Income
- Housing
- Employment & Transportation

Existing System Context

- Existing Parks & Recreation Facilities
- Park Classification Updates
- Park Condition Assessment

Operations & Governance

- Kitsap County Governance
- Department Operations & Staffing
- Comparative Analysis
- Volunteer/Stewardship Programs



Public Involvement

“Central to the success of this plan is robust public involvement, which is critical in shaping a parks system that reflects the community’s desired quality of life. Through various engagement methods, residents and park users, including stakeholders and policy makers, were encouraged to share their ideas, goals, and aspirations for the parks system, ensuring it meets their needs and enhances their daily lives.”

- **Public Survey #1:** Current use of Parks (July/August 2023)
- **Stakeholder Interviews:** One-on-One interviews with SCJ Alliance (September 2023)
 - Athletics
 - Events/Tourism
 - Environmental
 - Recreation
 - Stewards & Volunteers
 - School Districts
 - Parks Advisory Board
 - Board of County Commissioners
 - Parks Department Staff
- **Public Survey #2:** Visioning the future of Parks (October/November 2023)
- **Public Open House Events**(November 2023):
 - North Kitsap (Village Greens Community Center, Kingston)
 - Central Kitsap (Fairgrounds, Silverdale)
 - South Kitsap (County Admin Building, Port Orchard)
- **Tabling Event**
 - Kingston Open House (October 2023)
- **Youth Survey:** School Districts (February 2024)
- **Public Survey #3:** Capital Project Priorities (March/April 2024)
- **Presentations** (July 2023-December 2024):
 - Board of County Commissioners
 - Parks Advisory Board
 - Tribal Coordination Meeting
 - Suquamish Community Advisory Council
 - Central Kitsap Community Council



Demand & Needs Analysis

“The purpose of the demand and needs analysis is to evaluate, quantify, and understand both the facility and recreational demand and identify the existing and future needs for providing parkland, facilities, and open spaces now and into the future.”

- **Quantifications vs. Qualifications**
 - National Recreation Guidelines as a Quantitative Measure
- **Levels of Service (LOS)**
 - Washington State Recreation Guidelines
- **Population Growth Projections**
 - Park Equity & Access
- **Recreation Trends**
 - Statewide Comprehensive Outdoor Recreation Plan (2023)
 - RCO Assessment of Resident Demand (2022)
 - Trails
 - Canines
 - Pickleball & Padel
 - Youth Sports
 - Playground Trends
 - Electrification
 - Heat
 - Smoke
 - Climate Resiliency
 - Investments in Parks
 - Commission for Accreditation of Park and Recreation Agencies (CAPRA)
- **Summary of LOS Demand & Need**
 - National and State LOS Metrics
 - Local LOS Metrics



Goals & Objectives

“Balancing the public’s desires and vision with the evolving goals of comprehensive planning, the following mission, vision, goals, and objectives should be seamlessly integrated into the Parks & Open Space Element of the County’s Comprehensive Plan. The elements are foundational to the County’s aspirations and will play a vital role in guiding development and enhancement efforts for parks, recreation, and open spaces.”

- **A New Vision for Kitsap County**
 - All Staff Meeting
 - Mission & Vision (Department)
- **A County-Wide Vision**
 - Foundational Values
 - Mission, Vision, and Values (County)
- **Policy Goals, Objectives, and Actions**
 - Goals are organized by Parks Department Program or a Specialized Focus
 - 6 Goals
 - 2-6 Objectives per Goal
 - 3-5 Actions per Objective



Goals & Objectives

Goal

1. Promote a **sustainable parks system** that fosters opportunities for both active and passive recreation, encourages healthy lifestyles, safeguards natural habitats, and preserves and enhances significant environmental and historical resources.

Objectives

- 1.1 Park System Optimization
- 1.2 Land Acquisition Policies and Procedures
- 1.3 Park Development and Infrastructure
- 1.4 Accessibility Improvements
- 1.5 Trail Network Expansion
- 1.6 Enhance Resource Alignment & Strategic Partnerships

Goal Focus

System-Wide Management

Parks Department Program

Administration



Goals & Objectives

Goal

2. Develop and implement **natural resource management** plans to protect biodiversity and cultural resources, establish buffer zones and wildlife corridors, adopt sustainable land management practices, and preserve cultural heritage sites through interpretive signage, education programs, and collaboration with local tribes and cultural experts.

Objectives

- 2.1 Natural Resource Management Planning
- 2.2 Conservation and Stewardship

Goal Focus

Natural Resource Management

Parks Department Program

Natural Resources



Goals & Objectives

Goal

3. Integrate **sustainable design** into park planning and development to minimize environmental impact and enhance resource efficiency by incorporating green infrastructure, adopting native landscaping, and implementing energy-efficient practices.

Objectives

- 3.1 Promote Sustainable Park Design and Management
- 3.2 Environmental Assessments for Sustainable Planning
- 3.3 Trail Accessibility and Design
- 3.4 Water Trails Development

Goal Focus

Park Planning and Capital Development

Parks Department Program

Planning & Capital



Goals & Objectives

Goal

4. Enhance visitor amenities and services to **improve accessibility and overall experience** in County parks by upgrading trail signage, expanding parking and accessibility features, and implementing technology solutions for better engagement.

Objectives

- 4.1 Visitor Services Enhancement
- 4.2 Community Engagement
- 4.3 Trail Outreach Programs
- 4.4 Volunteer Stewardship and Educational Programs
- 4.5 Cultural Heritage Preservation

Goal Focus

User Experience and Community Engagement

Parks Department Program

Planning & Capital, Natural Resources, Events, M&O



Goals & Objectives

Goal

5. Enhance **event and athletic facilities** by upgrading and maintaining infrastructure, implementing efficient management operations, and exploring revenue-generating opportunities to attract regional events and support local recreation programs.

Objectives

- 5.1 Facility Management Efficiency
- 5.2 Recreation Tourism Development
- 5.3 Adaptive Event Support and Community Engagement

Goal Focus

Special Events Management

Parks Department Program

Events



Goals & Objectives

Goal

6. Ensure high standards in **park maintenance and operations** by establishing standardized management practices and effectively allocating resources to sustain park facilities and natural settings.

Objectives

- 6.1 Standardized Management Practices
- 6.2 Resource Allocation and Management
- 6.3 Trail Maintenance Enhancement
- 6.4 Trail Maintenance and Sustainability
- 6.5 Facility Upgrades and Maintenance

Goal Focus

Maintenance & Operations Management

Parks Department Program

Maintenance & Operations



Capital Improvement Plan

“This plan addresses the immediate needs of Kitsap’s diverse communities while preparing the parks system to meet future demands, delivering significant economic, social, and environmental benefits.”

“In harmony with Kitsap County’s strategic goals and woven into the Comprehensive Plan’s principles, this plan promotes a safe, healthy, and walkable community, cultural appreciation, and environmental preservation, reflecting the aspirations and desired quality of life of the County’s residents.”

- **Public Feedback as a Foundation to the CIP**

- Community Engagement Themes
 - Conservation and Landscape Resiliency
 - Connectivity and Trail Development
 - Access and Safety
 - Recreation Facilities and Amenities
 - Environmental Concerns and Open Space Protection
 - Community Engagement and Communication
 - Maintenance and Facility Upgrades

- **Developing the Capital Improvement Program**

- Kitsap County’s Financial Sources
- Estimate of Probably Cost
- Develop Strategic Projects to Maximize Funding Opportunities
- Performance & Monitoring
- Primary Funding Source Key
- CIP project Categories



CIP Projects

What: Trails, Trailheads, Parking and Access
Where: County-Wide

Table 6-3: Capital Improvement Project (CIP) List - Matrix							
District	Project Name	Description	Project Category	Priority / Year		Cost Rating	Funding Options
				1-6 Years	6+ Years		
Trails, Trailheads, Parking, and Access							
C	Newberry Hill Heritage Park	Add parking lot off of Seabeck Highway	2	X		\$\$\$	BO, W1, L, LO
N	Port Gamble Forest Heritage Park	Add parking and access	2	X		\$\$\$	BO, W1, L, LO
N	Hansville Greenway	Improve connection from Buck Lake Park parking lot and restrooms to Hansville Greenway trails	4	X		\$\$	BO, W1, L, LO
S	Banner Forest Heritage Park	Improve parking and access	2	X		\$\$\$	BO, W1, L, LO
N	Port Gamble Forest Heritage Park	Improve some trails to be barrier-free and wheelchair friendly	6	X		\$\$\$	BO, W1, L, LO
C	Newberry Hill Heritage Park	Improve some trails to be barrier-free and wheelchair friendly	6	X		\$\$\$	BO, W1, L, LO
N	Port Gamble Forest Heritage Park	Improve parking at Bay View Trailhead off of Highway 104	2	X		\$\$	BO, W1, L, LO
S	Banner Forest Heritage Park	Improve some trails to be barrier-free and wheelchair friendly	6	X		\$\$\$	BO, W1, L, LO
C	Illahee Preserve Heritage Park	Improve some trails to be barrier-free and wheelchair friendly	6	X		\$\$\$	BO, W1, L, LO
S	Wicks Lake Park	Develop park to include trail network in park, parking lots, and access	2	X		\$\$\$	BO, W1, L, LO
N	North Kitsap Heritage Park	Improve access at south side of park	2	X		\$\$	BO, W1, L, LO
S	Anderson Point Park	Expand Parking Lot	2	X		\$\$\$	BO, W1, L, LO
N	North Kitsap Heritage Park	Improve parking lot off of Norman Road	2	X		\$\$	BO, W1, L, LO
S	Coulter Creek Heritage Park	Improved Entrance/Parking Lot, utilities at SW trailhead	2	X		\$\$\$\$	BO, W1, L, LO
S	Coulter Creek Heritage Park	Add trailhead at Calvinwood Lodge	6	X		\$\$\$	BO, W1, L, LO
S	Wynn-Jones Preserve	Improve parking	2	X		\$\$	BO, W1, L, LO

CIP Projects

What: Recreation Facilities

Where: District 1 (North Kitsap)

Table 6-3: Capital Improvement Project (CIP) List - Matrix							
District	Project Name	Description	Project Category	Priority / Year		Cost Rating	Funding Options
				1-6 Years	6+ Years		
Recreation Facilities (District #1)							
N	Port Gamble Forest Heritage Park	Develop new park area at north parking lot (may include: playground, picnic shelter, benches, uncovered picnic tables)	2, 3, 4	X		\$\$\$\$	BO, W1, L, LO
N	Port Gamble Forest Heritage Park	Add a picnic shelter at mountain bike ride park	3	X		\$	BO, W1, L, LO
N	Location TBD	Add ADA accessible and inclusive playgrounds	3	X		\$\$\$	BO, W1, L, LO
N	Island Lake Park	Add a playground near picnic shelter and restrooms	3	X		\$\$	BO, W1, L, LO
N	Norwegian Point Park	Add fishing pier	3	X		\$\$	BO, W1, L, LO
N	Location TBD	Add pickleball courts	3	X		\$\$\$	BO, W1, L, LO
N	Norwegian Point Park	Add a picnic shelter	3	X		\$\$	BO, W1, L, LO
N	Location TBD	Add a disc golf course	3	X		\$\$\$	BO, W1, L, LO
N	Island Lake Park	Add a picnic shelter	3	X		\$	BO, W1, L, LO
N	Norwegian Point Park	Renovate fishing cabins	3	X		\$\$\$	BO, W1, L, LO

CIP Projects

What: Recreation Facilities

Where: District 3 (Central Kitsap)

Table 6-3: Capital Improvement Project (CIP) List - Matrix							
District	Project Name	Description	Project Category	Priority / Year		Cost Rating	Funding Options
				1-6 Years	6+ Years		
Recreation Facilities (District #3)							
C	Newberry Hill Heritage Park	Add restrooms	3	X		\$\$\$	BO, W1, L, LO
C	Illahee Preserve Heritage Park	Add restrooms	3	X		\$\$\$	BO, W1, L, LO
C	Wildcat Lake Park	Renovate park (may include: improve restrooms, replace playground, add a picnic shelter)	3	X		\$\$\$\$	BO, W1, L, LO
C	Fairgrounds & Event Center	Add outdoor open lawn space for festivals and special events	3	X		\$\$\$	BO, W1, L, LO
C	Fairgrounds & Event Center	Develop new park area (may include: new playground, picnic shelter, restrooms)	3	X		\$\$\$\$	BO, W1, L, LO
C	Fairgrounds & Event Center	Improve special event buildings (Pavilion, President's Hall, Eagle's Nest, barns)	3,5	X		\$\$\$\$	BO, W1, L, LO
C	Location TBD	Add ADA accessible and inclusive playgrounds	3	X		\$\$\$\$	BO, W1, L, LO
C	Location TBD	Add pickleball courts	3	X		\$\$\$	BO, W1, L, LO
C	Newberry Hill Heritage Park	Add picnic area (may include: picnic shelter, benches, uncovered picnic tables)	3	X		\$	BO, W1, L, LO
C	Fairgrounds & Event Center	Improve athletic fields with artificial turf (Gordon 2 soccer field, Lobe 1 and 4 baseball fields)	4	X		\$\$\$\$	BO, W1, L, LO
C	Fairgrounds & Event Center	Expand disc golf course	3	X		\$	BO, W1, L, LO
C	Nick's Lagoon Preserve	Add outdoor classroom shelter	3	X		\$	BO, W1, L, LO

CIP Projects

What: Recreation Facilities
Where: District 2 (South Kitsap)

Table 6-3: Capital Improvement Project (CIP) List - Matrix							
District	Project Name	Description	Project Category	Priority / Year		Cost Rating	Funding Options
				1-6 Years	6+ Years		
Recreation Facilities (District #2)							
S	Banner Forest Heritage Park	Add restrooms	3	X		\$\$\$	BO, W1, L, LO
S	Long Lake Park	Renovate park (may include: improve restrooms, replace playground, add a picnic shelter, benches)	3	X		\$\$\$\$	BO, W1, L, LO
S	South Kitsap Regional Park	Improve restrooms near playground	3	X		\$\$\$	BO, W1, L, LO
S	Horseshoe Lake Park	Renovate park (may include: improve restrooms, replace playground, add a picnic shelter)	3	X		\$\$\$\$	BO, W1, L, LO
S	Location TBD	ADA accessible and inclusive playgrounds	3	X		\$\$\$\$	BO, W1, L, LO
S	Howe Farm Park	Renovate barn for special events	3	X		\$\$\$	BO, W1, L, LO
S	Veteran's Memorial Park	Develop park (may include: restrooms, playground, picnic shelter, benches)	3	X		\$\$\$\$	BO, W1, L, LO
S	Location TBD	Add pickleball courts	3	X		\$\$\$	BO, W1, L, LO
S	Wicks Lake Park	Develop park (may include: restrooms, playground, picnic shelter, benches)	3	X		\$\$\$\$	BO, W1, L, LO
S	Coulter Creek Heritage Park	Renovate Calvinwood cabins and lodge	3	X		\$\$\$\$	BO, W1, L, LO

CIP Projects

What: Safety Projects and Enhancements
Where: County-Wide

Table 6-3: Capital Improvement Project (CIP) List - Matrix							
District	Project Name	Description	Project Category	Priority / Year		Cost Rating	Funding Options
				1-6 Years	6+ Years		
Safety Projects & Enhancements							
C	Silverdale Waterfront Park	Repair damage to undercut headwall	9	X		\$\$\$\$	A, BO, W1, L, LO
C	Silverdale Wetlands	Improve safety measures to reduce crime	9	X		\$	LO
N	Point no Point Park	Add a handrail to the bluff stairs	2	X		\$	LO
N	Port Gamble Forest Heritage Park	Improve safety measures to reduce crime	9	X		\$\$	LO
N	Port Gamble Forest Heritage Park	Improve safety measures for multi-use trails and user conflicts	6, 9	X		\$\$	LO
C	Illahee Preserve Heritage Park	Improve safety measures to reduce crime	9	X		\$\$	LO
N	Silverdale Rotary Gateway Park	Improve safety measures to reduce crime	9	X		\$\$	LO
S	Horseshoe Lake Park	Improve safety measures to reduce crime	9	X		\$\$	LO
S	South Kitsap Regional Park	Improve safety measures to reduce crime	9	X		\$\$	LO
C	Old Mill Park	Improve safety measures to reduce crime	9	X		\$\$	LO
C	Newberry Hill Heritage Park	Improve parking	2	X		\$\$	BO, W1, L, LO
S	Howe Farm Park	Fix fencing in off-leash dog park	3	X		\$	BO, W1, L, LO
N	Port Gamble Forest Heritage Park	Improve parking at Bay View Trailhead off of Highway 104	2	X		\$\$	BO, W1, L, LO

CIP Projects

What: Safety Projects and Enhancements
Where: County-Wide

Table 6-3: Capital Improvement Project (CIP) List - Matrix							
District	Project Name	Description	Project Category	Priority / Year		Cost Rating	Funding Options
				1-6 Years	6+ Years		
Safety Projects & Enhancements							
C	Fairgrounds & Event Center	Improve buildings for better ADA access	2	X		\$\$\$	BO, W1, L, LO
S	Howe Farm Park	Improve maintenance of off-leash dog park	3	X		\$\$	BO, W1, L, LO
S	Long Lake County Park	Add lighting to the parking lot	2	X		\$\$	BO, W1, L, LO
C	Fairgrounds & Event Center	Replace playground	3	X		\$\$\$	BO, W1, L, LO
N	Port Gamble Forest Heritage Park	Increase accessibility	2, 9	X		\$\$\$	BO, W1, L, LO
S	South Kitsap Regional Park	Fix pavement at park entrance off of Jackson Avenue	2	X		\$\$	BO, W1, L, LO
S	Veteran's Memorial Park	Add safety lighting	3	X		\$\$	BO, W1, L, LO
S	Veteran's Memorial Park	Improve drainage near ballfields	4	X		\$\$\$	BO, W1, L, LO
S	Wicks Lake Park	Add a parking area	2	X		\$\$\$	BO, W1, L, LO
S	South Kitsap Regional Park	Add a new gate to the park entrance off of Lund Street	2	X		\$\$	BO, W1, L, LO
S	Coulter Creek Heritage Park	Add lighted signs	3	X		\$	BO, W1, L, LO

CIP Projects

What: Conservation/Landscape Resilience
Where: County-Wide

Table 6-3: Capital Improvement Project (CIP) List - Matrix							
District	Project Name	Description	Project Category	Priority / Year		Cost Rating	Funding Options
				1-6 Years	6+ Years		
Conservation / Landscape Resilience							
N	Port Gamble Forest Heritage Park	Construct bridge over creek on Springs trail	6	X			BO, W1, L, LO
N, C, S	All Parks	Decommission or remove trails that cross wetlands and other critical areas	6	X	X	\$\$\$\$	BO, W1, L, LO
N	Indianola Woodlands	Replace bridge over creek near beach	6	X			BO, W1, L, LO
N	Eglon Forest	Develop natural resource management plan for new park	7	X			BO, W1, L, LO
S	Coulter Creek	Create wetland and pond management plan including hydrologic analysis, beaver habitat, and recreation impacts analysis	7	X			BO, W1, L, LO
C	Guillemot Cove	Remove boardwalk and bridge from estuary and relocate trail crossing	6	X			BO, W1, L, LO
S	Howe Farm	Remove boardwalk from flooded stream corridor	6	X			BO, W1, L, LO
C	Guillemot Cove	Remove cabin and headwall on south side of estuary	7	X			BO, W1, L, LO

Plan Adoption

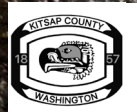
“In order for this Plan to be formally adopted, it must undergo a thorough review process involving several entities, including opportunities for public input. The adoption process culminates in a resolution, ordinance, or similar instrument demonstrating formal approval of the plan and planning process by the governing entity.”

- **Public Review**

- Public Comment Period – 5 weeks (February 10-March 15)
- SEPA – 2 weeks (TBD)
- Planning Commission – 2 weeks (TBD)
- Board of County Commissioners – 1 week (TBD)

- **Adoption Process**

- Parks Advisory Board
- Planning Commission
- Board of County Commissioners
- State (RCO) Approval





Timeline to Approval

Who	What	When
Board of County Commissioners (BoCC)	Distribute PROS to BoCC	January 27
Parks Advisory Board (PAB)	Distribute PROS to PAB	February 10
Department of Community Development (DCD)	PROS to DCD for compliance review with 2024 Comp Plan	February 10
Public	Draft PROS Public Comment Period	February 10 – March 15 (5 weeks)
Suquamish, Port Gamble S’Klallam, Squaxin Tribes	Draft PROS to Tribes for Review and Comments	February 10 – March 15
Public (North Kitsap Public Meeting)	Present PROS to public for comment period kick-off	February 11
Parks Advisory Board (PAB)	Present PROS to PAB	February 13
Public (South Kitsap Public Meeting)	Present PROS to public for comment period kick-off	February 20
Public (Central Kitsap Community Council)	Present PROS to public for comment period kick-off	March 5
Parks Advisory Board (PAB)	PAB provides comments and a recommendation (or April meeting)	March 19
SCJ Alliance	Update PROS based on PAB and public comments	March 17 – March 28
Department of Community Development (DCD)	PROS to DCD for Non-Project SEPA Determination	March 31
Public	SEPA Determination 14-day public comment period	April 7 – April 20 (2 weeks)
Board of County Commissioners (BoCC)	PROS to BoCC for Review of Public Comments	April 16
Planning Commission	PROS Briefing (15 minutes)	April 15
Planning Commission	Distribute PROS to Planning Commission	May 6
Planning Commission	Present PROS to Planning Commission	May 20
Public	Planning Commission 2-week public comment period	May 20 – June 3 (2 weeks)
Planning Commission	Deliberation on PROS	June 3
Planning Commission	Finding of Fact & Approval	June 3
Board of County Commissioners (BoCC)	PROS to BoCC for Review of Planning Commission Findings	TBD (week of June 9-13)
Board of County Commissioners (BoCC)	PROS to BoCC for Presentation and Open Public Hearing	June 23
Public	Public Comment Period for Public Hearing	June 23 – June 30 (1 week)
Board of County Commissioners (BoCC)	PROS to BoCC for Deliberations	TBD (June 30 – June 4)
Board of County Commissioners (BoCC)	PROS to BoCC for Deliberations	TBD (June 7 – July 11)
Board of County Commissioners (BoCC)	PROS to BoCC for Deliberations	TBD (July 14 – July 18)
Board of County Commissioners (BoCC)	PROS to BoCC to for Approval	July 21
Recreation and Conservation Office (RCO)	PROS to RCO for Approval	TBD (July 28 – August 1)



Thank you!