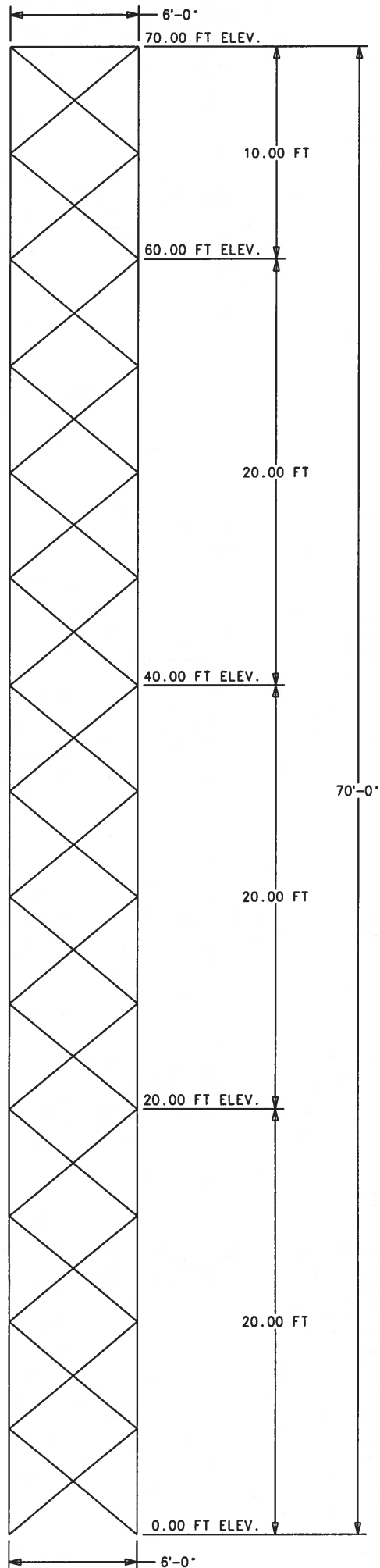


MEMBER TYPE & SIZE CHART

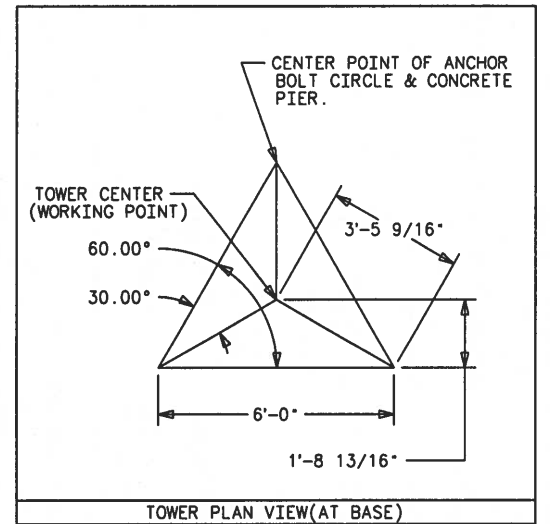
SECTION 1 ELEVATION = 60.00 FT TO 70.00 FT	
LEG	= PIPE 2.88 O.D. X 0.203 WALL THK.
DIAGONAL	= 4 1.75 X 1.75 X 0.188
HORIZONTAL	= 4 2.50 X 2.50 X 0.188
APPROXIMATE SECTION WEIGHT = 500#	
SECTION 2 ELEVATION = 40.00 FT TO 60.00 FT	
LEG	= PIPE 2.88 O.D. X 0.203 WALL THK.
DIAGONAL	= 4 1.75 X 1.75 X 0.188
APPROXIMATE SECTION WEIGHT = 850#	
SECTION 3 ELEVATION = 20.00 FT TO 40.00 FT	
LEG	= PIPE 2.88 O.D. X 0.203 WALL THK.
DIAGONAL	= 4 1.75 X 1.75 X 0.188
APPROXIMATE SECTION WEIGHT = 850#	
SECTION 4 ELEVATION = 0.00 FT TO 20.00 FT	
LEG	= PIPE 3.50 O.D. X 0.216 WALL THK.
DIAGONAL	= 4 1.75 X 1.75 X 0.188
APPROXIMATE SECTION WEIGHT = 950#	

APPROXIMATE TOWER WEIGHT = 3150#



NOTES:

- MAXIMUM DESIGN REACTIONS AT BASE:
 SHEAR = 4.43 KIPS/LEG
 VERTICAL DOWNWARD = 77.01 KIPS/LEG
 VERTICAL UPWARD = 72.74 KIPS/LEG
- TOWER DESIGN CRITERIA: EIA/TIA-222-G ^{1/2} H
- THIS STRUCTURE HAS BEEN DESIGNED FOR THE FOLLOWING LOADING:
 EXPOSURE CATEGORY = C
 STRUCTURE CLASSIFICATION = III (ESSENTIAL)
 TOPOGRAPHY CATEGORY = 1
 A. CASE 1 WIND = 85 MPH ICE = 0.00 IN (ASD)
 CASE 2 WIND = 30 MPH ICE = 0.50 IN
 CASE 3 WIND = 60 MPH ICE = 0.00 IN
 FOR TWIST & SWAY
 B. ANTENNA LOADING IS PER THE ANTENNA MOUNTING TABLE SHOWN BELOW.
- FINISH: GALVANIZED PER ASTM A-123
- THIS QUOTE/PERMIT DRAWING SHALL NOT BE USED FOR CONSTRUCTION.
- SITE NAME = KITSAP COUNTY DEM
- V_{ult} = 110 MPH



ANTENNA MOUNTING TABLE

ANTENNA TYPE & MODEL NO.	SIZE (DECIMAL FEET)	FREQUENCY	QTY.	*MOUNTING HEIGHT (DECIMAL FEET)	MOUNTING AZIMUTH
1-Rope Pulley		N/A		70.00 FT	N/A
1-ANT220K		N/A		35.00 FT	N/A
1-3' x 12' DIPOLE		N/A		20.00 FT	N/A
1-MEDIUM YAGI		N/A		65.00 FT	N/A
1-MEDIUM YAGI		N/A		60.00 FT	N/A
1-ANT50D		N/A		65.00 FT	N/A
1-ANT50D		N/A		60.00 FT	N/A
1-PANEL (12' X 8' X 3')		N/A		70.00 FT	N/A
1-ANT50D		N/A		35.00 FT	N/A
1-MEDIUM YAGI		N/A		60.00 FT	N/A
1-ANT150F2		N/A		35.00 FT	N/A
1-ANT150F2		N/A		20.00 FT	N/A
5-SP1 PSA3		N/A		65.00 FT	N/A
3-SP1 PSA3		N/A		35.00 FT	N/A
2-SP1 PSA3		N/A		20.00 FT	N/A

* = CENTERLINE OF ANTENNA , N/A = NOT AVAILABLE