

Kitsap County Planning Commission

Open Space Permit Falcone/Nagle 26-00056

Jason Robert Walsh - Planner

June 2, 2026



KitsapCounty

Department of Community Development

Falcone/Nagle – Open Space

Site Location:

257 NW Two Crane LN

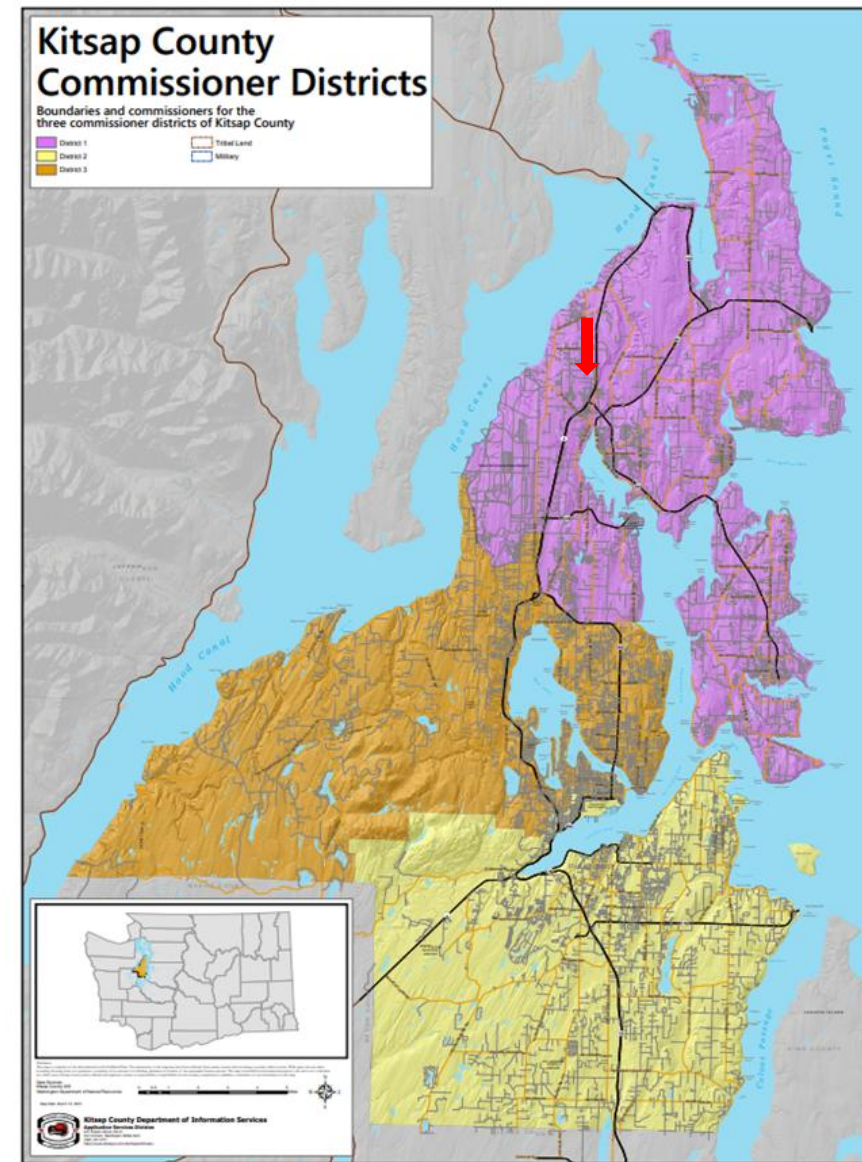
Poulsbo, WA 98370

Parcels:

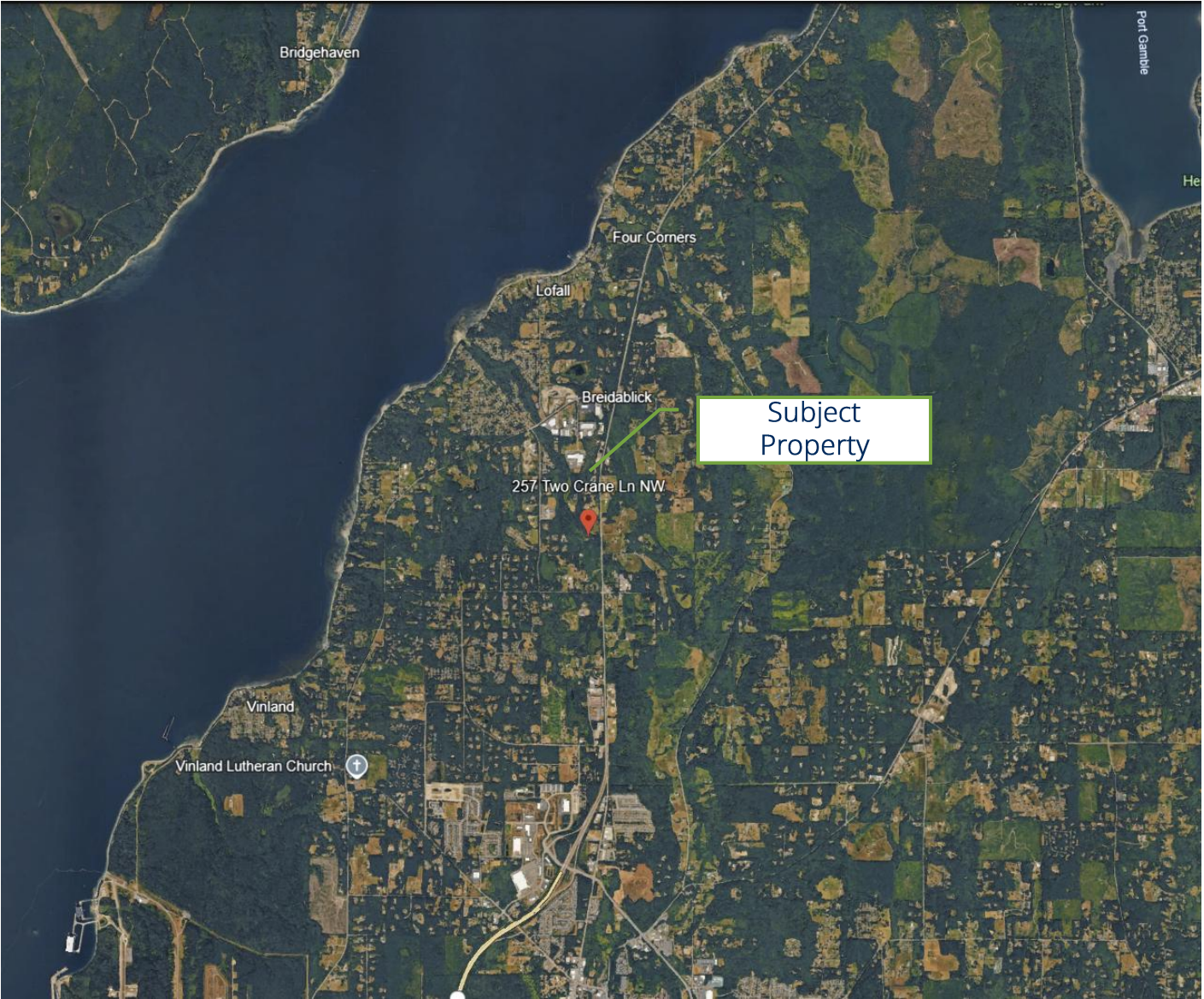
342701-1-039-2007

342701-1-022-2006

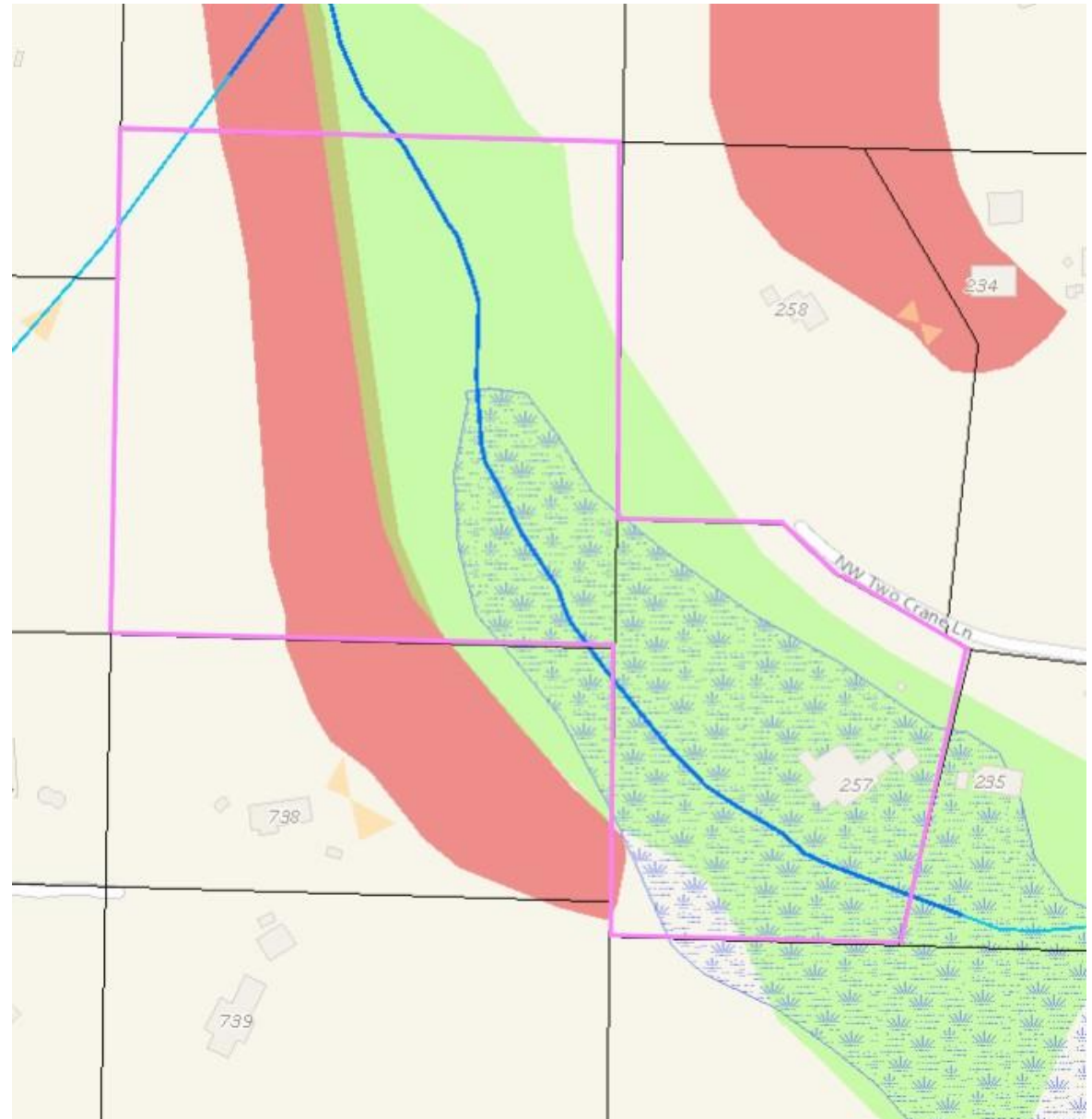
Commissioner District: 1



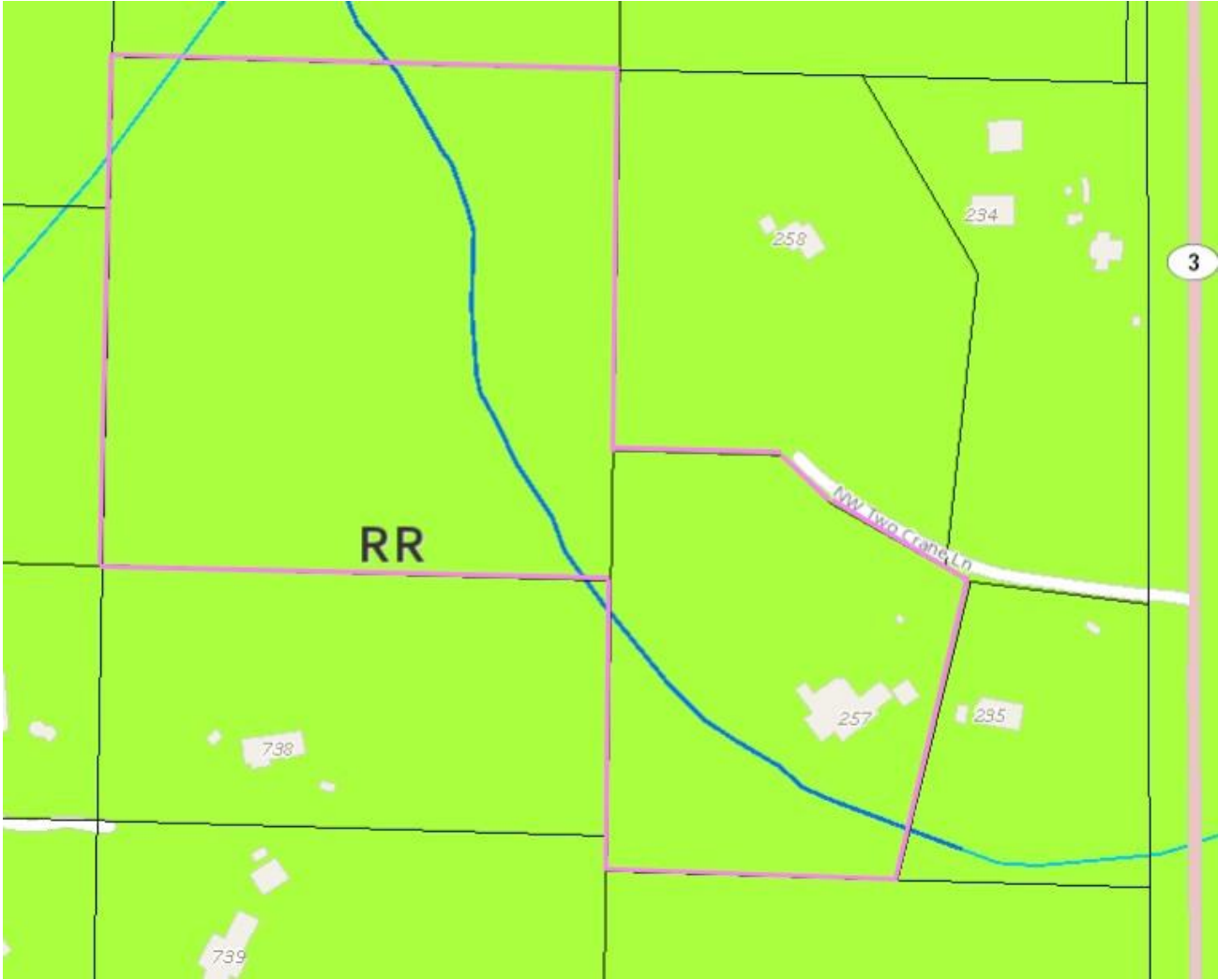
Vicinity Aerial Map



Critical Areas Map



Zoning (RR) 1 DU/5 acres



Kitsap County Aerial Photo 2021



Kitsap County Aerial Photo 1994



High-Priority Resources:

Wetlands, Ponds, Streams
Watershed/Aquifer

Medium-Priority Resources:

Secondary Stream Buffer

- RCW 84.34 & KCC 18.12
- 50% Tax Reduction
- No public access option
- Planning Commission recommendation
- BOCC approval

Low-Priority Resources:

Preservation of visual quality
Steep slopes

Kitsap Planning Commission

Questions?

Falcone/Nagle
Open Space Application
Permit # 26-00056

June 2, 2026

