

Landing on Attribute Evolutions


BIBI Scoring

Shellfish Growing Areas

Fish Passage Barriers

BIBI Scoring

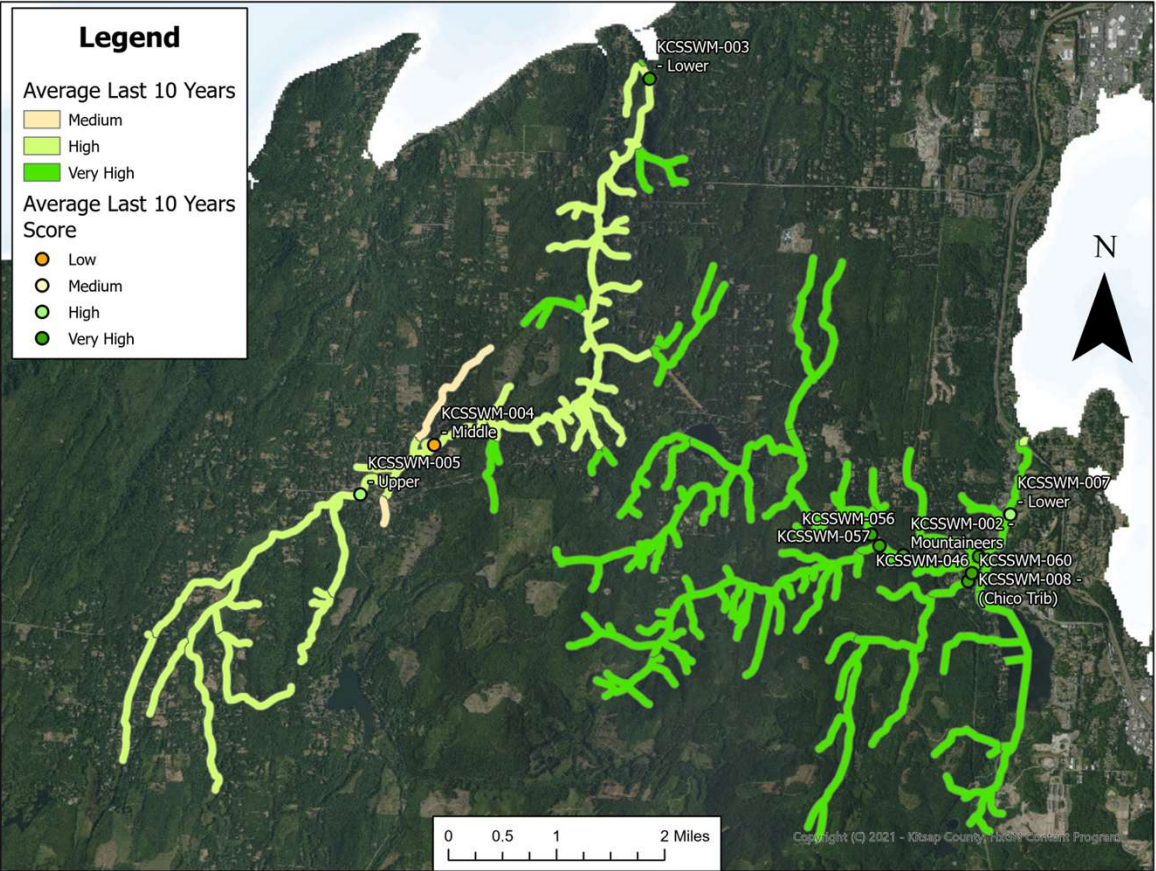
| Attribute | Indicator | Condition Rating | | | | |
|----------------------------------|-----------------------------------|------------------|-------|--------|-------|-----------|
| | | Very Low | Low | Medium | High | Very High |
| S2. Biological condition (B-IBI) | Aggregated B-IBI score for stream | ≤ 20 | 21-40 | 41-60 | 61-80 | 81-100 |



- Take the average score for the last 5 samples at each station no more than 10 years back.
- Assign MUs all sampling stations downstream.
- Natural breaks in stream connection done by hand (i.e., lakes separate BIBI connection to upstream MU).

BIBI Scoring Data

| ID | Watershed | MU ID | BIBI Station | BIBI Score | MU Average | AverageScore | TenYrAvgbyMU |
|----|-------------|-------|---------------------|------------|-------------|--------------|--------------|
| 19 | Big Beef | S_289 | KCSSWM-004 - Middle | 30.6 | 59.73333333 | 30.6 | 61.50888889 |
| 14 | Big Beef | S_786 | KCSSWM-004 - Middle | 30.6 | 53 | 30.6 | 55.53 |
| 12 | Big Beef | S_41 | KCSSWM-004 - Middle | 30.6 | 53 | 30.6 | 55.53 |
| 3 | Big Beef | S_33 | KCSSWM-004 - Middle | 30.6 | 59.73333333 | 30.6 | 61.50888889 |
| 16 | Big Beef | S_31 | KCSSWM-004 - Middle | 30.6 | 59.73333333 | 30.6 | 61.50888889 |
| 25 | Big Beef | S_660 | KCSSWM-004 - Middle | 30.6 | 59.73333333 | 30.6 | 61.50888889 |
| 22 | Big Beef | S_400 | KCSSWM-004 - Middle | 30.6 | 59.73333333 | 30.6 | 61.50888889 |
| 44 | Chico Creek | S_413 | KCSSWM-007 - Lower | 74.9 | 79.86 | 62.87777778 | 81.00222222 |
| 52 | Chico Creek | S_298 | KCSSWM-007 - Lower | 74.9 | 81.85 | 62.87777778 | 80.85277778 |
| 39 | Chico Creek | S_81 | KCSSWM-007 - Lower | 74.9 | 79.86 | 62.87777778 | 81.00222222 |
| 57 | Chico Creek | S_92 | KCSSWM-007 - Lower | 74.9 | 79.86 | 62.87777778 | 81.00222222 |
| 60 | Chico Creek | S_79 | KCSSWM-007 - Lower | 74.9 | 84.775 | 62.87777778 | 80.73569444 |
| 48 | Chico Creek | S_56 | KCSSWM-007 - Lower | 74.9 | 81.85 | 62.87777778 | 80.85277778 |
| 27 | Chico Creek | S_423 | KCSSWM-007 - Lower | 74.9 | 74.9 | 62.87777778 | 62.87777778 |
| 64 | Chico Creek | S_80 | KCSSWM-007 - Lower | 74.9 | 84.775 | 62.87777778 | 80.73569444 |
| 68 | Chico Creek | S_91 | KCSSWM-007 - Lower | 74.9 | 84.775 | 62.87777778 | 80.73569444 |
| 72 | Chico Creek | S_308 | KCSSWM-007 - Lower | 74.9 | 84.775 | 62.87777778 | 80.73569444 |
| 34 | Chico Creek | S_55 | KCSSWM-007 - Lower | 74.9 | 81.35714286 | 62.87777778 | 82.5965873 |



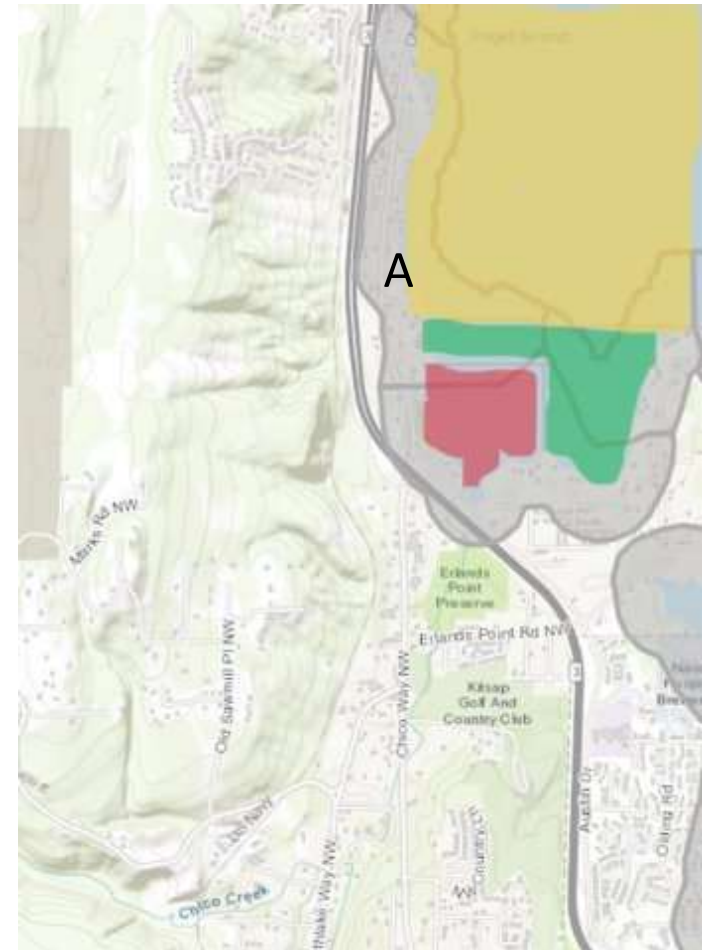
Shellfish Growing Areas

Overarching rule – if a classification is less than 10% of the total MU area, we void/null **that classification** for that MU.

| Attribute | Indicator | Condition Rating | | | | |
|-------------------|---------------------------------|------------------|--------------------------|-------------|---------------------|-----------|
| | | Very Low | Low | Medium | High | Very High |
| | | | | | | |
| M3. Water Quality | SGA Classification status in MU | Prohibited | Prohibited & cond./appr. | Conditional | Conditional & appr. | Approved |
| | | | | | | |

Shellfish Growing Areas

- If a management unit has large areas of “Approved” and “Conditional” but only a sliver of “Prohibited” (less than 10% of the total MU area), we remove the “Prohibited” classification from that MU and score it according to the remaining classifications within the MU. In this example it would be scored High because it has “Conditional” and “Approved” but no “Prohibited”.

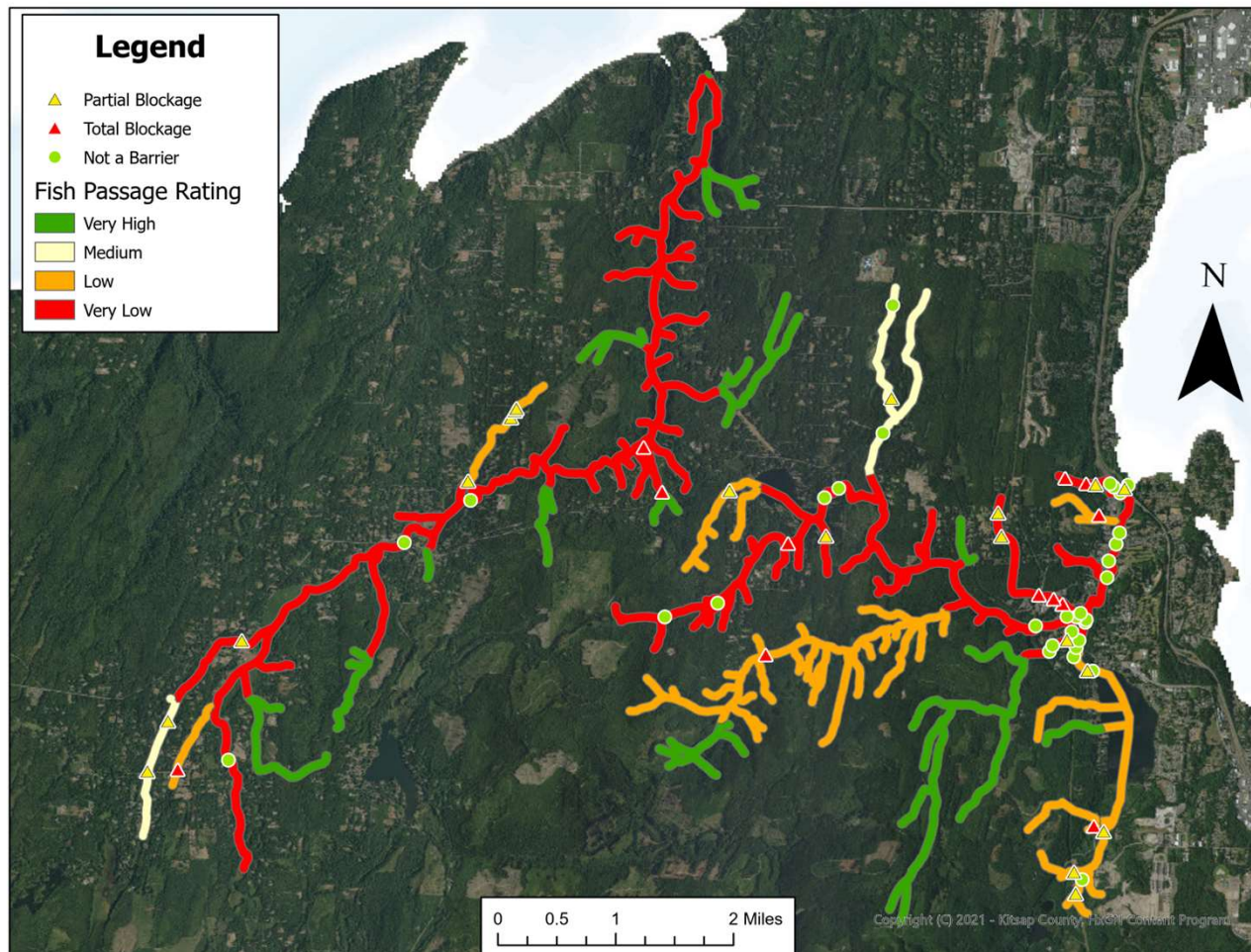


Fish Passage Barrier

Option 1 – 0% barriers are scored (2 and MUs are categorized into Very low or Low regardless), 33% and 67% barriers are scored (1), and then 100% barriers are presence absence within an MU.

| Attribute | Indicator | Condition Rating | | | | |
|------------------|-------------------|------------------------------|-------------------------------|----------------------|------------------------|----------------------|
| | | Very Low | Low | Medium | High | Very High |
| S4. Fish Passage | Barrier's present | 5+ (Presence of 0% passable) | 3-4 (presence of 0% passable) | 1-2 (No 0% passable) | 0 (with 100% passable) | 0 (No 100% passable) |
| | | | | | | |

Fish Passage Scores for Pilot Watersheds



Priority Actions in the Pilot Watersheds

- Given the County's limited resources, how do we improve LOS where it is low and protect LOS where it is high?
- What do we do first?

