

Kitsap Natural Resources Asset Management Program

Core Team Workshop 2

April 12, 2024, 1:00-3:00 pm



Welcome – Agenda & Goals

Goals:

- Review and refine a draft Pilot Watersheds Priority Actions Matrix
- Review a draft KNRAMP County-Wide Decision-Making Framework to guide the KNRAMP program

Time	Agenda Item
1:00 PM	Welcome and Introductions
1:05 PM	Updated Attributes - WCAEF
1:15 PM	Priority Actions for the Pilot Watersheds - WCAEF
1:55 PM	Initial Discussion: County-Wide Decision-Making Framework – Ross Strategic
2:45 PM	Updates from Partners <ul style="list-style-type: none">• Suquamish Tribe• Port Gamble S'Klallam Tribe• Kitsap County
3:00 PM	Adjourn

2024 Milestones





Updated Attributes

Landing on Attribute Evolutions

BIBI Scoring

Shellfish Growing Areas

Fish Passage Barriers

BIBI Scoring

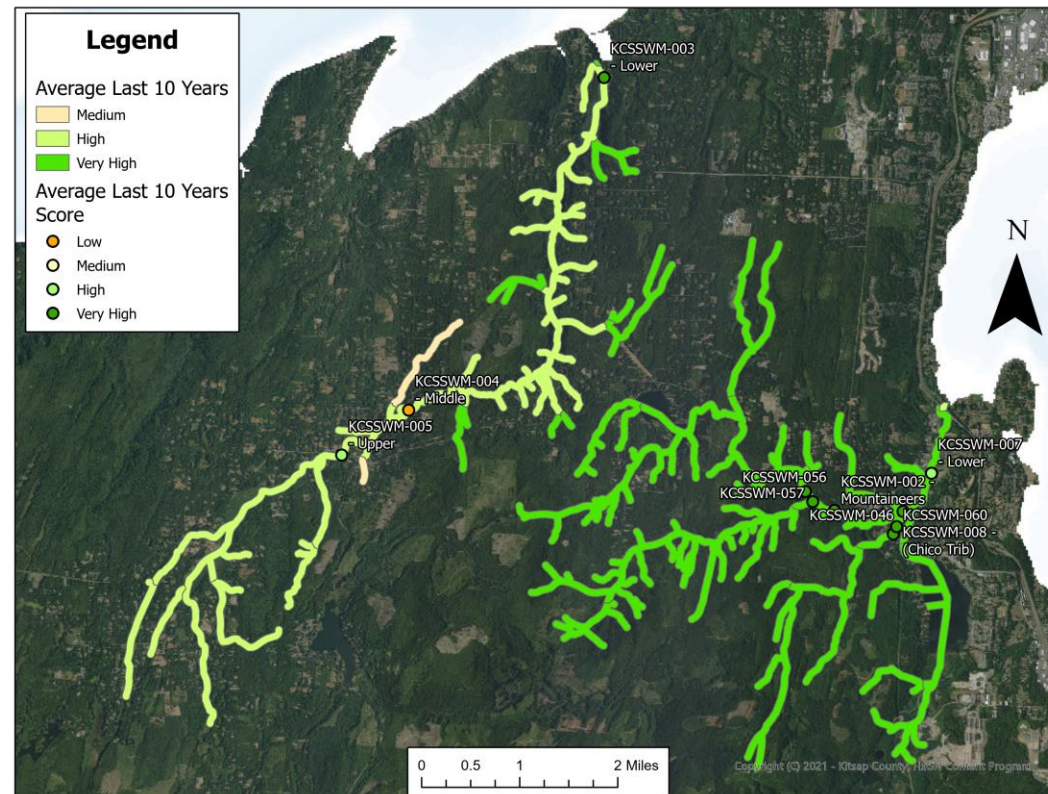
Attribute	Indicator	Condition Rating				
		Very Low	Low	Medium	High	Very High
S2. Biological condition (B-IBI)	Aggregated B-IBI score for stream	≤ 20	21-40	41-60	61-80	81-100



- Take the average score for the last 5 samples at each station no more than 10 years back.
- Assign MUs all sampling stations downstream.
- Natural breaks in stream connection done by hand (i.e., lakes separate BIBI connection to upstream MU).

BIBI Scoring Data

ID	Watershed	MU ID	BIBI Station	BIBI Score	MU Average	AverageScore	TenYrAvgbyMU
19	Big Beef	S_289	KCSSWM-004 - Middle	30.6	59.73333333	30.6	61.50888889
14	Big Beef	S_786	KCSSWM-004 - Middle	30.6	53	30.6	55.53
12	Big Beef	S_41	KCSSWM-004 - Middle	30.6	53	30.6	55.53
3	Big Beef	S_33	KCSSWM-004 - Middle	30.6	59.73333333	30.6	61.50888889
16	Big Beef	S_31	KCSSWM-004 - Middle	30.6	59.73333333	30.6	61.50888889
25	Big Beef	S_660	KCSSWM-004 - Middle	30.6	59.73333333	30.6	61.50888889
22	Big Beef	S_400	KCSSWM-004 - Middle	30.6	59.73333333	30.6	61.50888889
44	Chico Creek	S_413	KCSSWM-007 - Lower	74.9	79.86	62.87777778	81.00222222
52	Chico Creek	S_298	KCSSWM-007 - Lower	74.9	81.85	62.87777778	80.85277778
39	Chico Creek	S_81	KCSSWM-007 - Lower	74.9	79.86	62.87777778	81.00222222
57	Chico Creek	S_92	KCSSWM-007 - Lower	74.9	79.86	62.87777778	81.00222222
60	Chico Creek	S_79	KCSSWM-007 - Lower	74.9	84.775	62.87777778	80.73569444
48	Chico Creek	S_56	KCSSWM-007 - Lower	74.9	81.85	62.87777778	80.85277778
27	Chico Creek	S_423	KCSSWM-007 - Lower	74.9	74.9	62.87777778	62.87777778
64	Chico Creek	S_80	KCSSWM-007 - Lower	74.9	84.775	62.87777778	80.73569444
68	Chico Creek	S_91	KCSSWM-007 - Lower	74.9	84.775	62.87777778	80.73569444
72	Chico Creek	S_308	KCSSWM-007 - Lower	74.9	84.775	62.87777778	80.73569444
34	Chico Creek	S_55	KCSSWM-007 - Lower	74.9	81.35714286	62.87777778	82.5965873



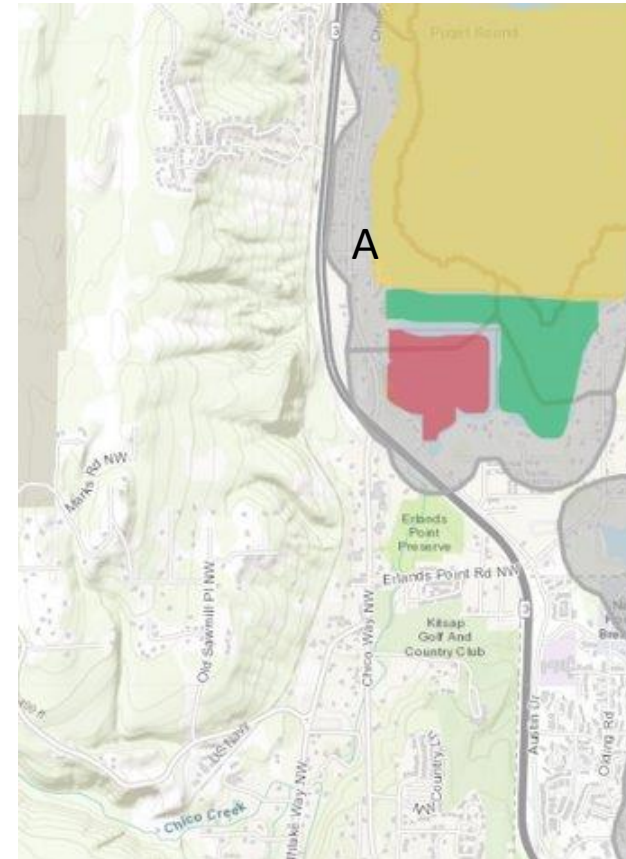
Shellfish Growing Areas

Overarching rule – if a classification is less than 10% of the total MU area, we void/null **that classification** for that MU.

Attribute	Indicator	Condition Rating				
		Very Low	Low	Medium	High	Very High
M3. Water Quality	SGA Classification status in MU	Prohibited	Prohibited & cond./appr.	Conditional	Conditional & appr.	Approved

Shellfish Growing Areas

- If a management unit has large areas of “Approved” and “Conditional” but only a sliver of “Prohibited” (less than 10% of the total MU area), we remove the “Prohibited” classification from that MU and score it according to the remaining classifications within the MU. In this example it would be scored High because it has “Conditional” and “Approved” but no “Prohibited”.

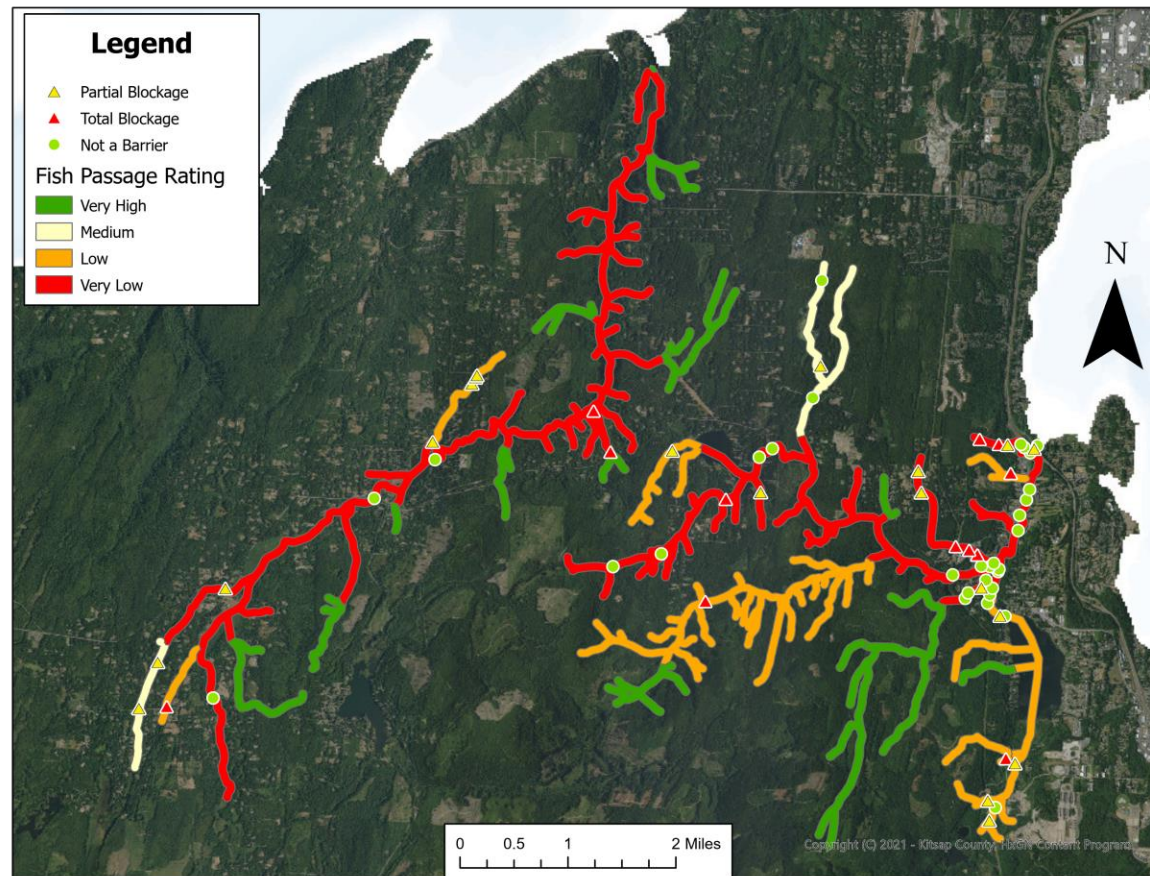


Fish Passage Barrier

Option 1 – 0% barriers are scored (2 and MUs are categorized into Very low or Low regardless), 33% and 67% barriers are scored (1), and then 100% barriers are presence absence within an MU.

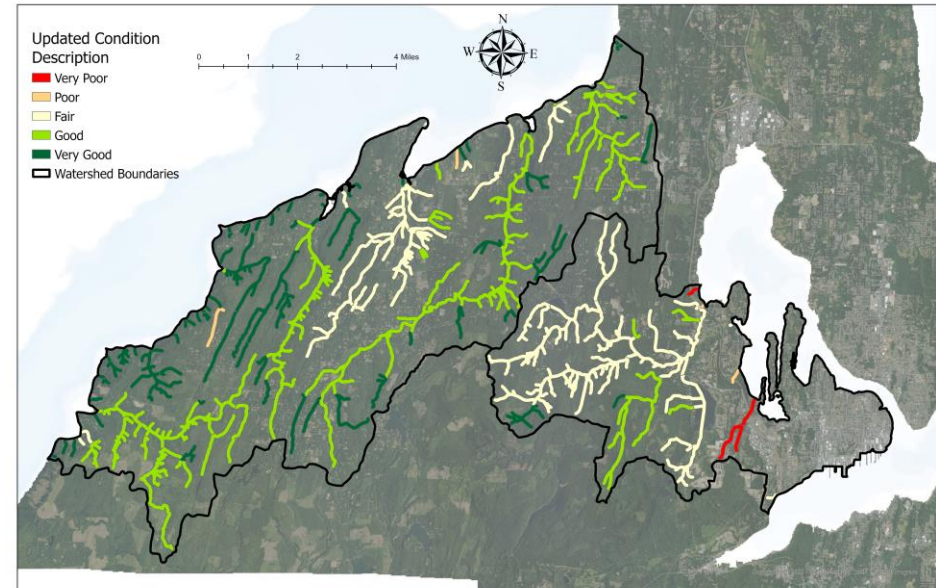
Attribute	Indicator	Condition Rating				
		Very Low	Low	Medium	High	Very High
S4. Fish Passage	Barrier's present	5+ (Presence of 0% passable)	3-4 (presence of 0% passable)	1-2 (No 0% passable)	0 (with 100% passable)	0 (No 100% passable)

Fish Passage Scores for Pilot Watersheds



Priority Actions in the Pilot Watersheds

- Given the County's limited resources, how do we improve LOS where it is low and protect LOS where it is high?
- What do we do first?





Priority Actions for the Pilot Watersheds: Matrix



County-Wide Decision-Making Framework

Framework Goals

Goal: Help County departments and groups “be on the same page” about where natural assets are, the services they provide, their health/status, and actions that can be taken to preserve well-functioning natural assets and restore assets that are under performing.

The purpose of this Framework is to describe:

- What information and resources KNRAMP will make available
- Coordination between KNRAMP and County Departments
- How County Departments will use KNRAMP information to inform priority setting and investment decisions.

Level-setting & Creating common understanding

- The decisions the framework addresses are:
 - *How will the KNRAMP program identify and sequence actions to take in response to LOS information?*
 - *What factors and considerations will the KNRAMP program use to get from LOS information to a list of potential actions?*
 - *How will the KNRAMP program determine what projects could have the greatest impact for natural resources?*
- We understand that the initial scope for this decision making is the pilot watersheds and after that pilot work we will consider refinements and application to the county overall.

Framework Steps

- 1. Describe and interpret current level of service (LOS) across the County.**
- 2. Identify restoration and preservation opportunities and recommended actions (use Core Team as Advisory Group) associated with LOS.**
- 3. Identify a set of areas and associated actions that are priorities for KNRAMP (use Core Team as Advisory Group).**
 - Identify most important and urgent areas and actions based on evaluation criteria
 - Identify complexity including low hanging fruits and more complex items
- 4. Package information on LOS and recommended activities and actions and share with County departments to inform priorities and investment decisions.**

Step 1

Describe and interpret current level of service (LOS) across the County.

- Run Cartegraph annually to describe the current LOS County-wide.
- Organize LOS information by natural asset -- marine shorelines, forests, and streams – and geography.
- For assets that are below DLOS, identify the attributes driving the low LOS for each asset.
- For assets that are at or above DLOS, identify the attributes driving the high LOS for each asset.

Step 2

Identify restoration and preservation opportunities and associated recommended actions (use Core Team as Advisory Group) associated with LOS. *This is intended to be a general interpretation and may not change much each year.*

- Describe the types of actions that can be taken to ***protect and improve*** LOS where LOS are below DLOS and/or falling and the intent is to improve LOS and/or reverse a trend.
- Describe the types of actions that can be taken to ***protect and maintain*** these LOS where LOS are at or above DLOS and the intent is to preserve this function.
- These outcomes / recommendations may be different in different parts of the county.

Step 3

Identify a set of areas and associated actions that are priorities for KNRAMP (use Core Team as Advisory Group). *This is intended to be a more specific set of projects that KNRAMP identifies based on LOS information.*

- Identify areas and associated actions that are most important and urgent based on evaluation criteria.
- Identify the complexity:
 - ***The low hanging fruits*** (areas/actions that are easy to address)
 - ***The more complex actions*** (areas/actions requiring more resources, having multiple project phases, needing more coordination with multiple departments, or having a longer timeframe).
- Group asset management actions into: protection, restoration.
- Consider how we balance protection vs restoration activities.

Step 4

Package information on LOS and recommended activities and actions and share with County departments to inform priorities and investment decisions.

- Develop a brief yearly report that includes:
 - maps with County-wide LOS status
 - list of areas in need or restoration and gap toward the DLOS
 - list of areas in need of preservation
 - list of recommended actions that are both important and urgent to address.
- Share the report with County departments and Lead Entities ahead of their prioritization processes and participate in County-wide prioritization discussions.

County-wide decision-making framework: Next steps

- Schedule 1-1 conversations with Core Team members
- Update the Framework based on today's feedback
- Further discuss the list of criteria
- Further discussion at the next workshop

Discussion Questions

1. Are the correct steps presented for decision making? What is missing?
2. Is an Advisory Group the best method for decision making on prioritization? Should this Core Team be the Advisory Group and are you or a designated representative willing to participate on an Advisory Group?



Core Team Updates

- Suquamish Tribe
- Port Gamble S’Klallam Tribe
- Kitsap County

Next Steps

- Update Matrix based on feedback
- Update County-wide decision-making framework
- Schedule Site Visit
 - Strong interest indicated in having an in-person site visit



Thank you!